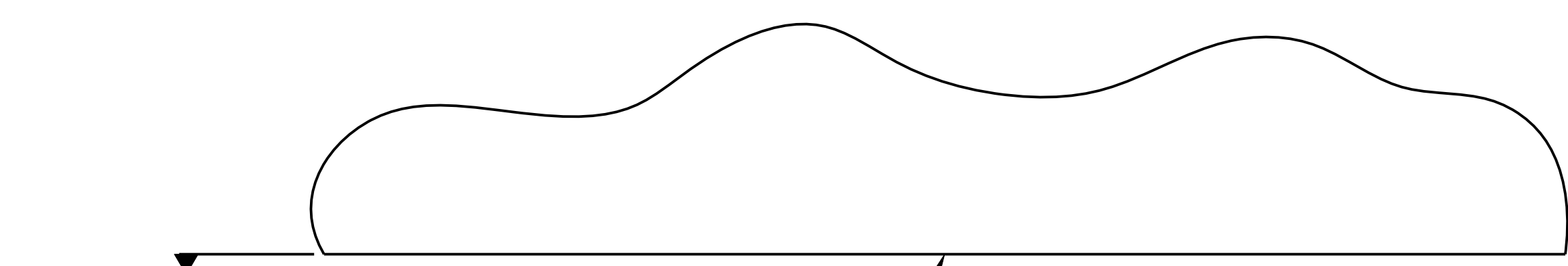
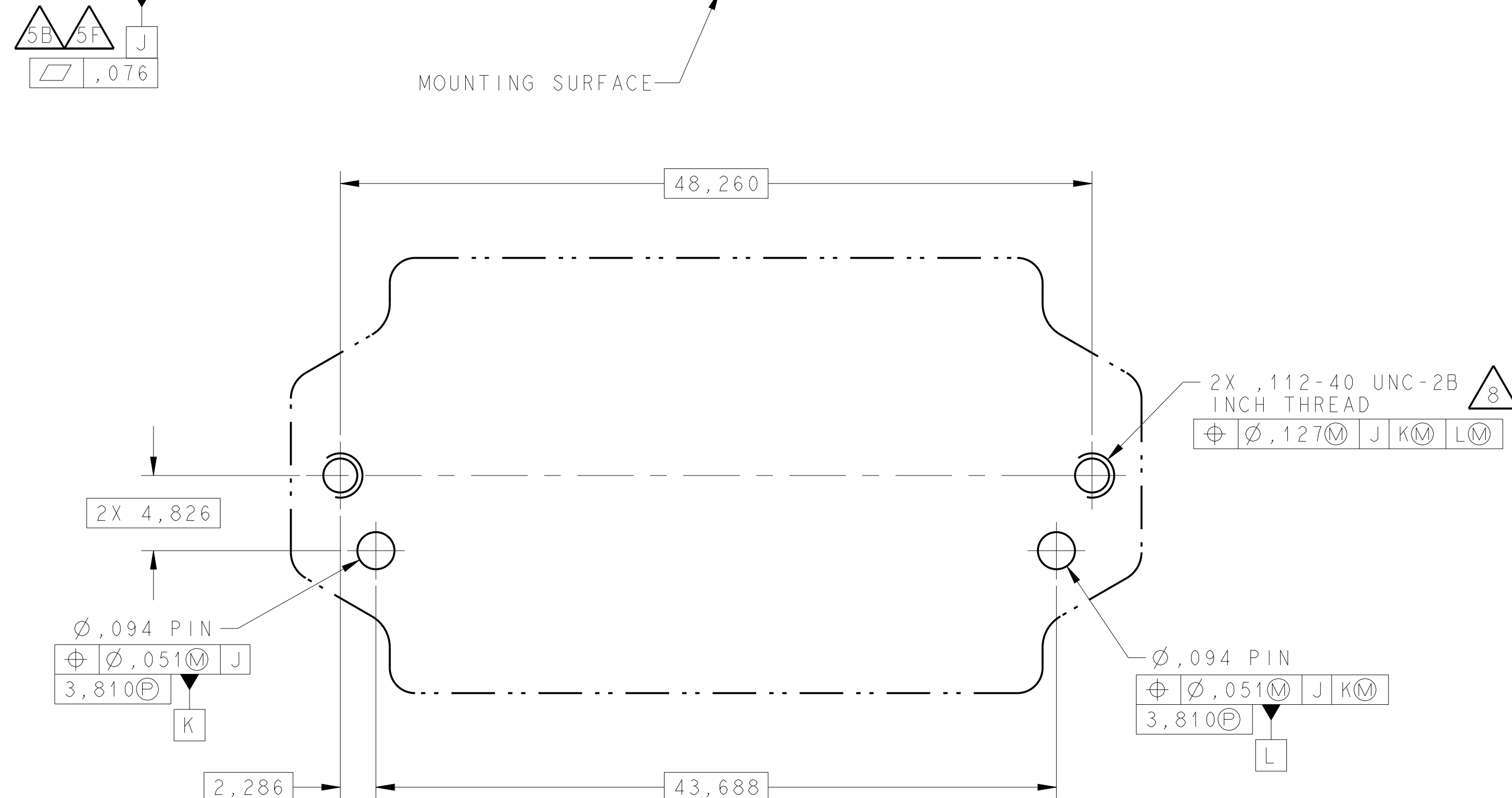


SUBJECT TO U.S. EXPORT REGULATIONS

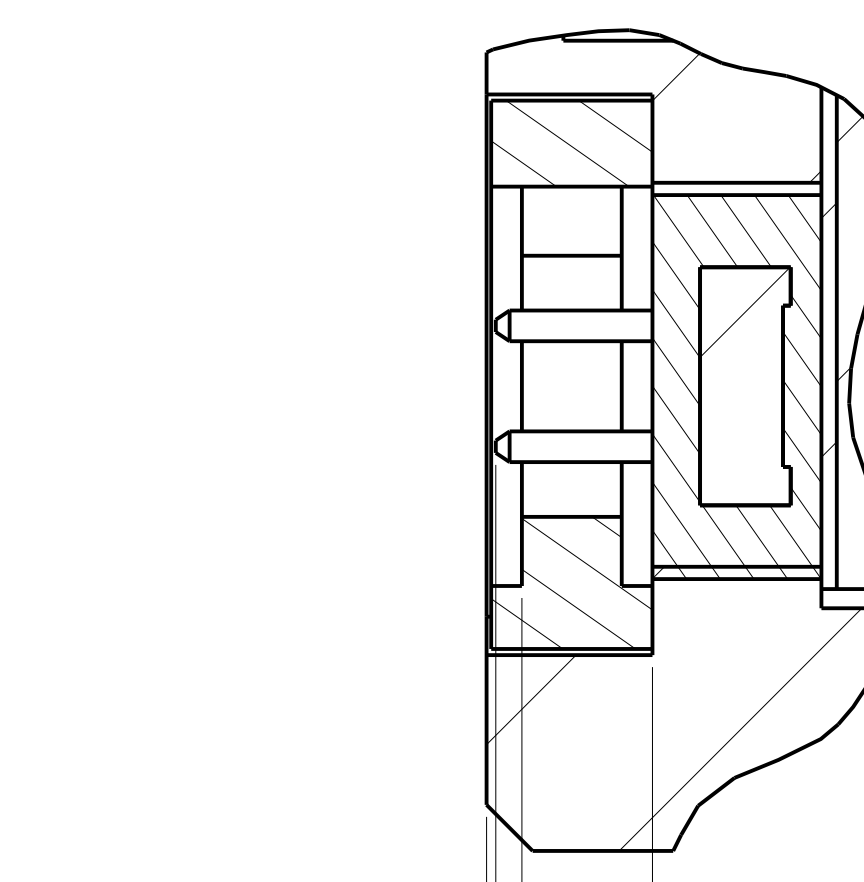
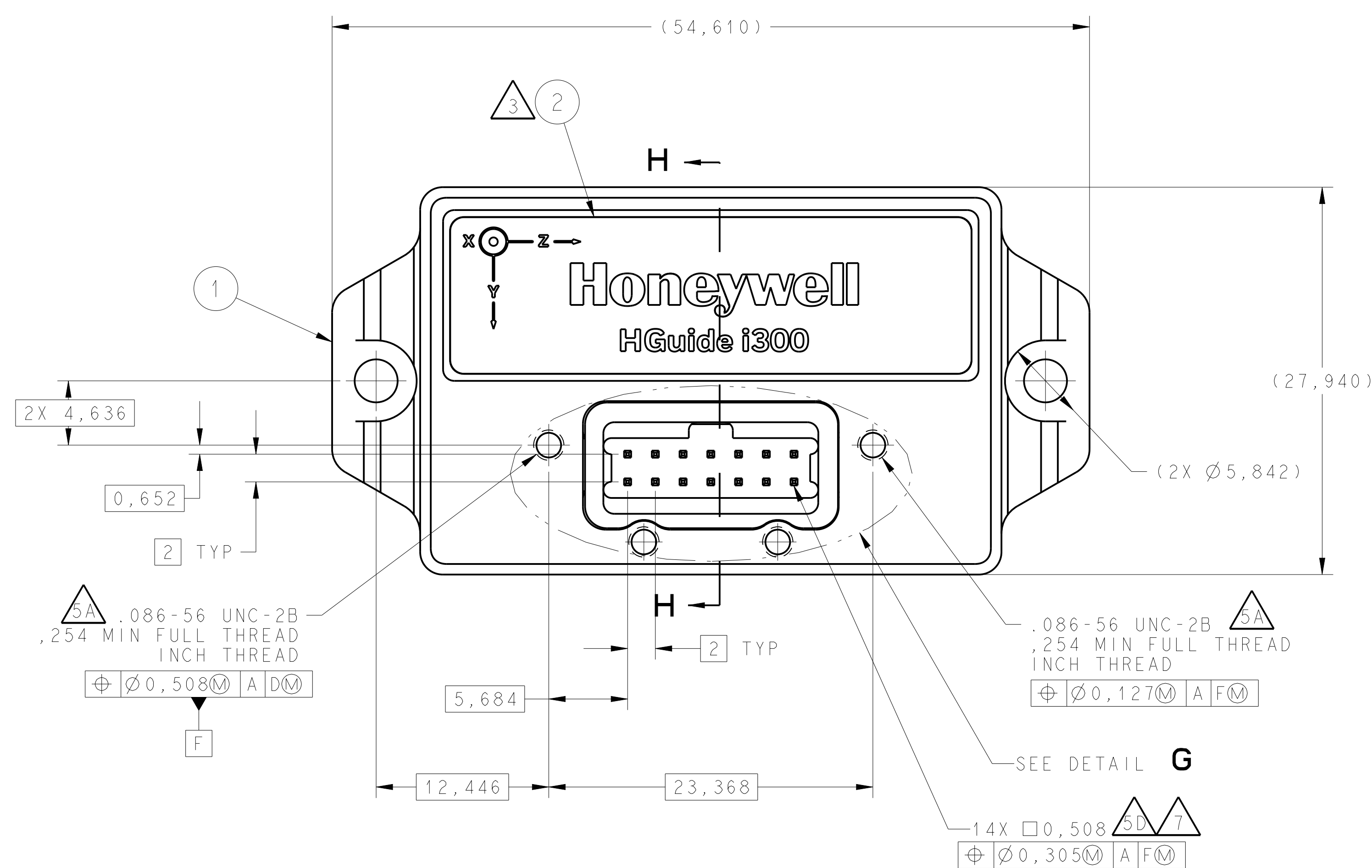
| CAD MAINTAINED. CHANGES SHALL BE INCORPORATED BY THE CURRENT DESIGN ACTIVITY | | | |
|--|-----|-------------------------------|------------|
| REVISION HISTORY - ALL SHEETS ARE THE SAME REVISION | | | |
| ZONE | REV | DESCRIPTION | DATE |
| - | - | SEE INITIAL RELEASE ECO-XXXXX | YYYY-MM-DD |
| | | | APPROVED |
| | | | XXXXXX |



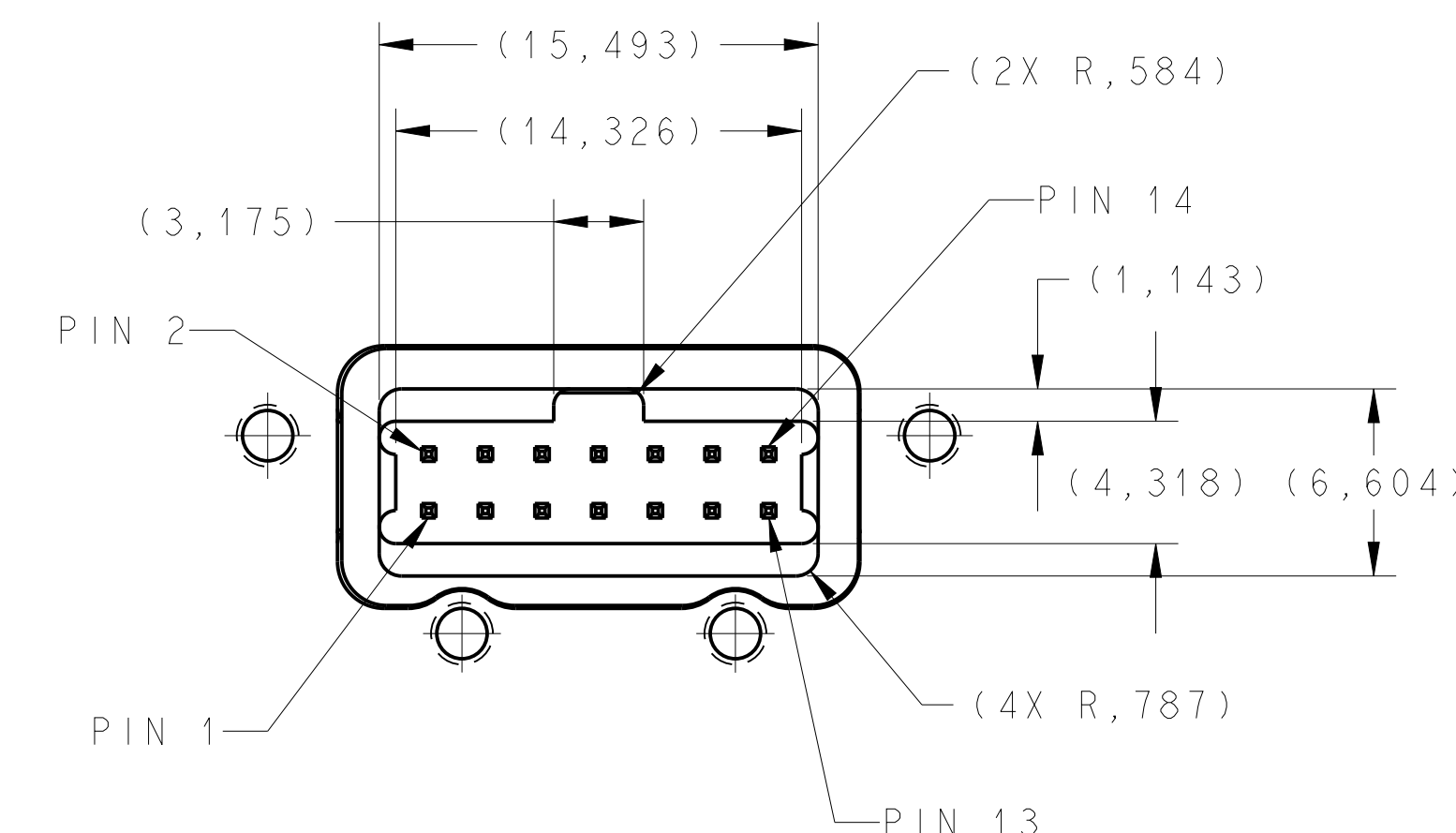
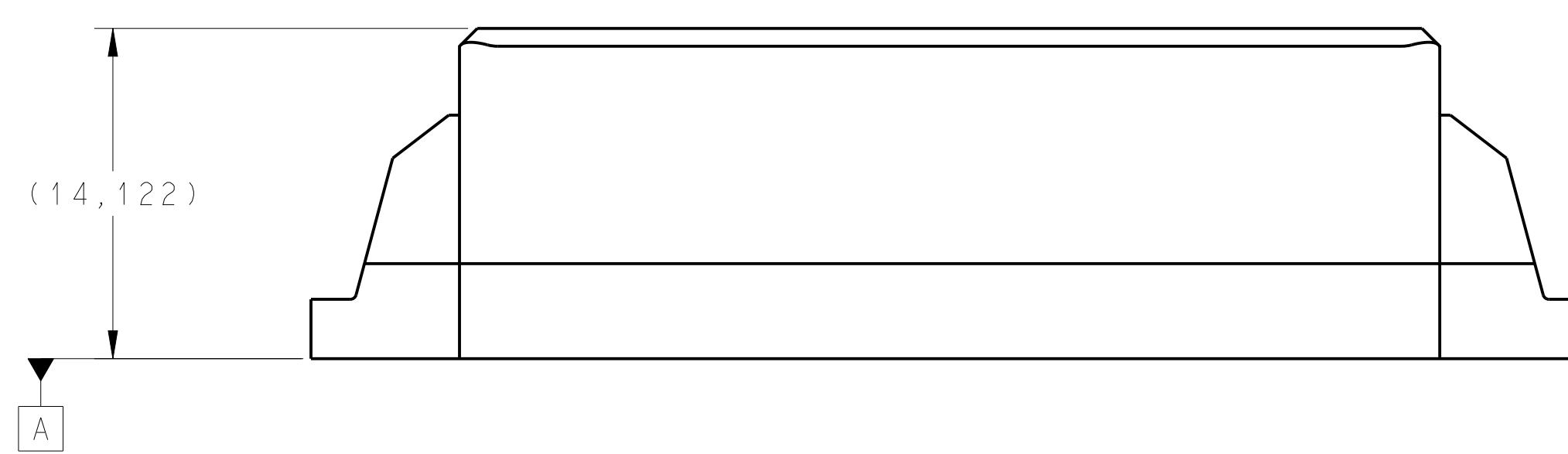
MOUNTING SURFACE



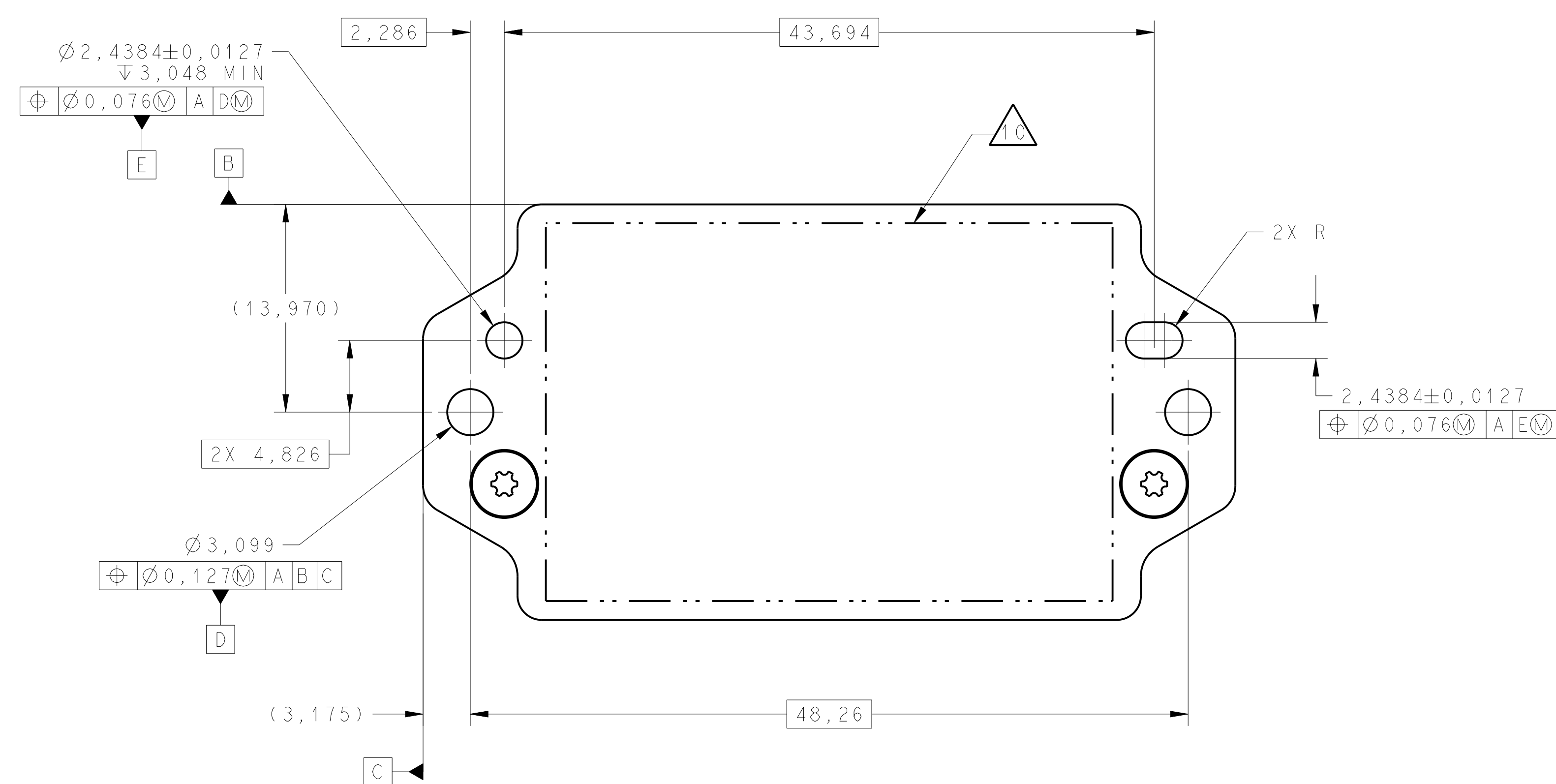
RECOMMENDED MOUNTING



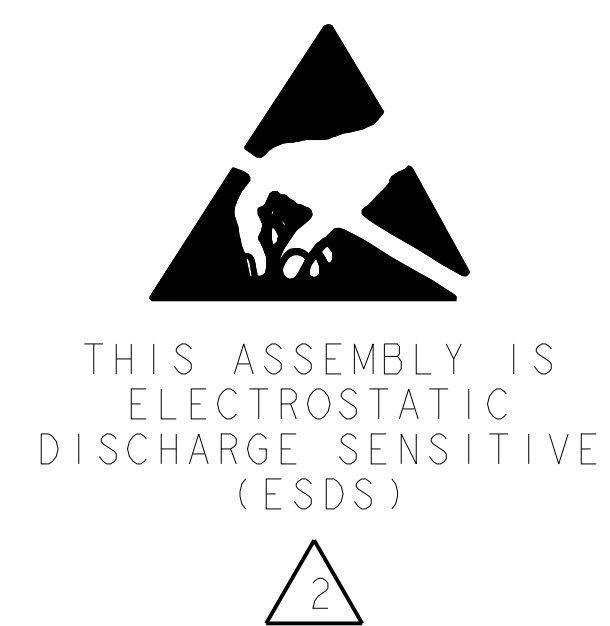
SECTION H-H
SCALE 8/1



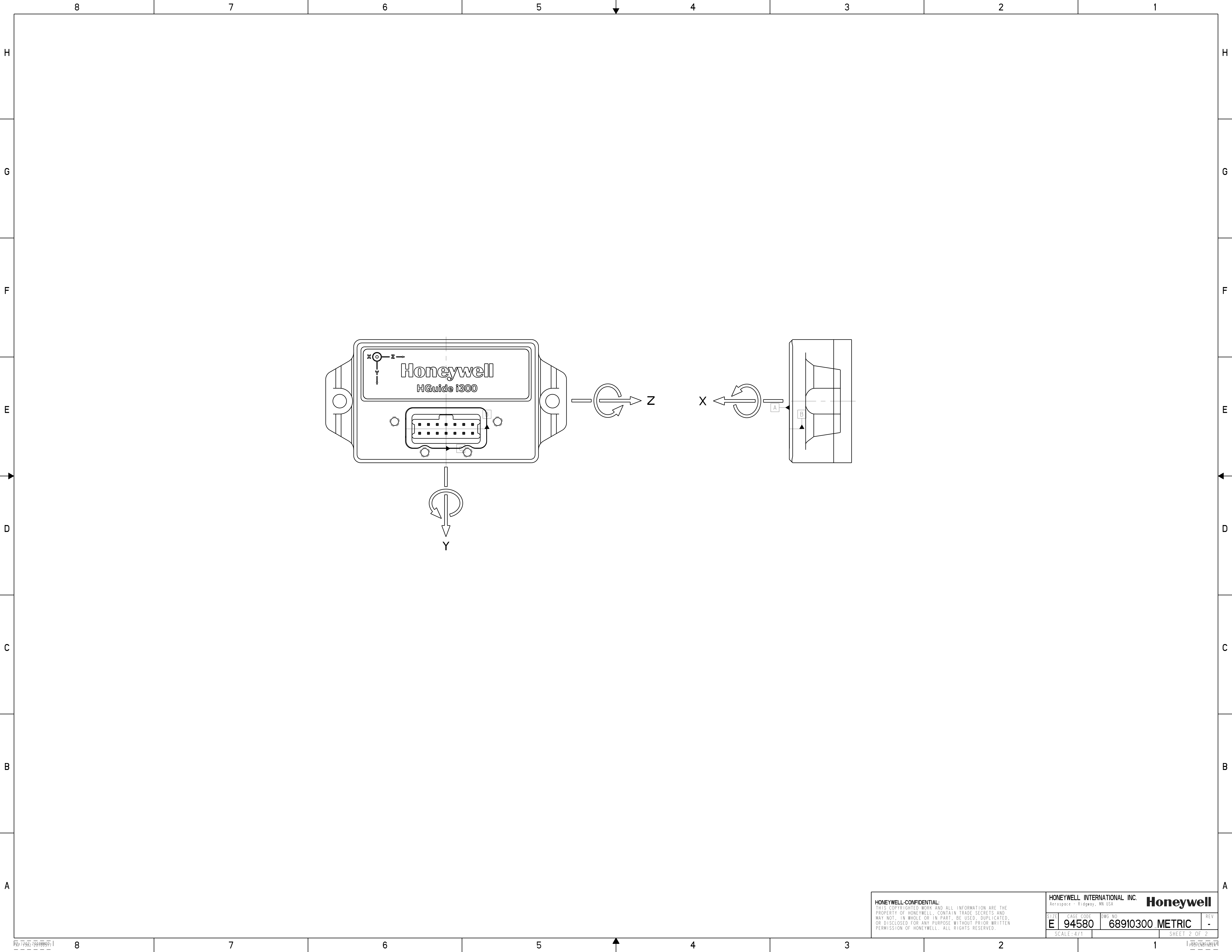
DETAIL G
MATING CONNECTOR AREA
SCALE 4/1



- NOTES:
- DIMENSIONING AND TOLERANCING IAW ASME Y14.5-2009 UNLESS OTHERWISE SPECIFIED DIMENSIONS ARE IN MILLIMETERS TOLERANCES ON:
 $\leq \pm .25$
 $.XX \pm .25$
 $.XXX \pm .127$
 - THIS ASSEMBLY IS ELECTROSTATIC SENSITIVE (ESDS). CATEGORY 1B. HANDLE, TEST AND PACKAGE PER ANSI ESD S20.20 (PC29100-04)
 - USING MC6609-01 (ASTM D770) PER PC29003-01 METHOD 6, STEP A ONLY, CLEAN RECESS AREA THEN APPLY LABEL FN 2 TO IMU FN 1 IN THE CENTER OF THE RECESSED AREA APPROXIMATELY AS SHOWN
 - MOUNT IMU ON DATUM A SURFACE ONLY
 - MAX SCREW EXTENSION 3,302 FROM TOP SURFACE, .254 MIN SCREW INSERTION RECOMMENDED
 - MOUNTING SURFACE IS REQUIRED TO SUPPORT IMU DURING ALL EXPOSED ENVIRONMENTS AND MAINTAIN FLATNESS TO WITHIN .003 INCH OR MOUNT APPROVED BY HONEYWELL
 - DO NOT SOLDER INTERCONNECT, SEAL INTEGRITY CAN BE COMPROMISED
 - REMOVAL OF PROTECTIVE PLATE VOIDS PIN DAMAGE WARRANTY
 - ELECTRICALLY GROUNDED MOUNTING SURFACE IS RECOMMENDED SOURCE OF IMU CHASSIS GROUND
 - A KEYING FEATURE IS PROVIDED TO ADDRESS MISORIENTATION OF CONNECTOR INTERFACE. IMPROPER ORIENTATION CAN CAUSE IMU DAMAGE
 - DEVICE CONNECTOR SAMTEC PART NUMBER MTMM-107 SERIES. MATES WITH SAMTEC CLT SERIES CONNECTOR, KEYED CONNECTOR SAMTEC PART NUMBER ASP-115812-01
 - MOUNT DEVICE WITH TWO .112-40 UNC SOCKET HEAD CAP SCREWS TORQUED TO X.X ±.X IN-LBS MIN, X.X ±.X IN-LBS RECOMMENDED. OPTIONAL MOUNTING: MOUNT DEVICE WITH TWO M3 SCREWS TORQUED TO X.X IN-LBS MIN
 - DIMENSIONS CONTROLLED BY SUB-ASSEMBLY DRAWINGS
 - LASER ENGRAVE PRODUCT INFORMATION PER FN 3 IN THIS REGION



| | | | |
|---|---|----------------------------------|--|
| US GOVERNMENT DATA RIGHTS NONE | SIMILAR PART NO NA | DRAWING START DATE 2018-07-11 | HONEYWELL INTERNATIONAL INC. Aerospace - Ridgway, MN USA |
| HONEYWELL DATA RIGHTS STANDARD HONEYWELL PROPRIETARY | PROGRAM NA | CHECKER M. COU | |
| HONEYWELL CONFIDENTIAL: THIS COPYRIGHTED WORK AND ALL INFORMATION ARE THE PROPERTY OF HONEYWELL. CONTAIN TRADE SECRETS AND MAY NOT, IN WHOLE OR IN PART, BE USED, DUPLICATED, OR DISCLOSED FOR ANY PURPOSE WITHOUT PRIOR WRITTEN PERMISSION OF HONEYWELL. ALL RIGHTS RESERVED. | MA WORK ORD/EWO/NETWORK ACTIVITY NO NA | PROJECT P. LERBON | TITLE HGUIDE I300 IMU |
| | SALES ORDER NUMBER NA | QUALITY ANALYST | SCALE: 4/1 |
| | 68910300 | THIRD ANGLE PROJECTION | ELECTRONIC APPROVALS INITIAL RELEASE: ECO-73172 ALL APPROVALS CONTROLLED BY THE PRODUCT DATA MANAGEMENT SYSTEM |
| NEXT ASSY USED ON INITIAL APPLICATION | | CONTRACT NUMBER NA | REV - |



HONEYWELL-CONFIDENTIAL:
 THIS COPYRIGHTED WORK AND ALL INFORMATION ARE THE PROPERTY OF HONEYWELL. CONTAIN TRADE SECRETS AND MAY NOT, IN WHOLE OR IN PART, BE USED, DUPLICATED, OR DISCLOSED FOR ANY PURPOSE WITHOUT PRIOR WRITTEN PERMISSION OF HONEYWELL. ALL RIGHTS RESERVED.

HONEYWELL INTERNATIONAL INC.
 Aerospace - Ridgway, MN USA

Honeywell

| | | | |
|------------|-----------|-----------------|--------------|
| SIZE | CAGE CODE | DWG. NO. | REV. |
| E | 94580 | 68910300 METRIC | - |
| SCALE: 4/1 | | | SHEET 2 OF 2 |