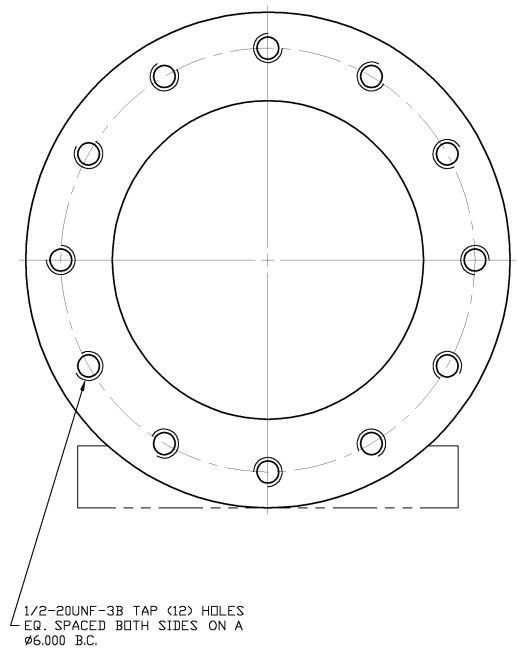
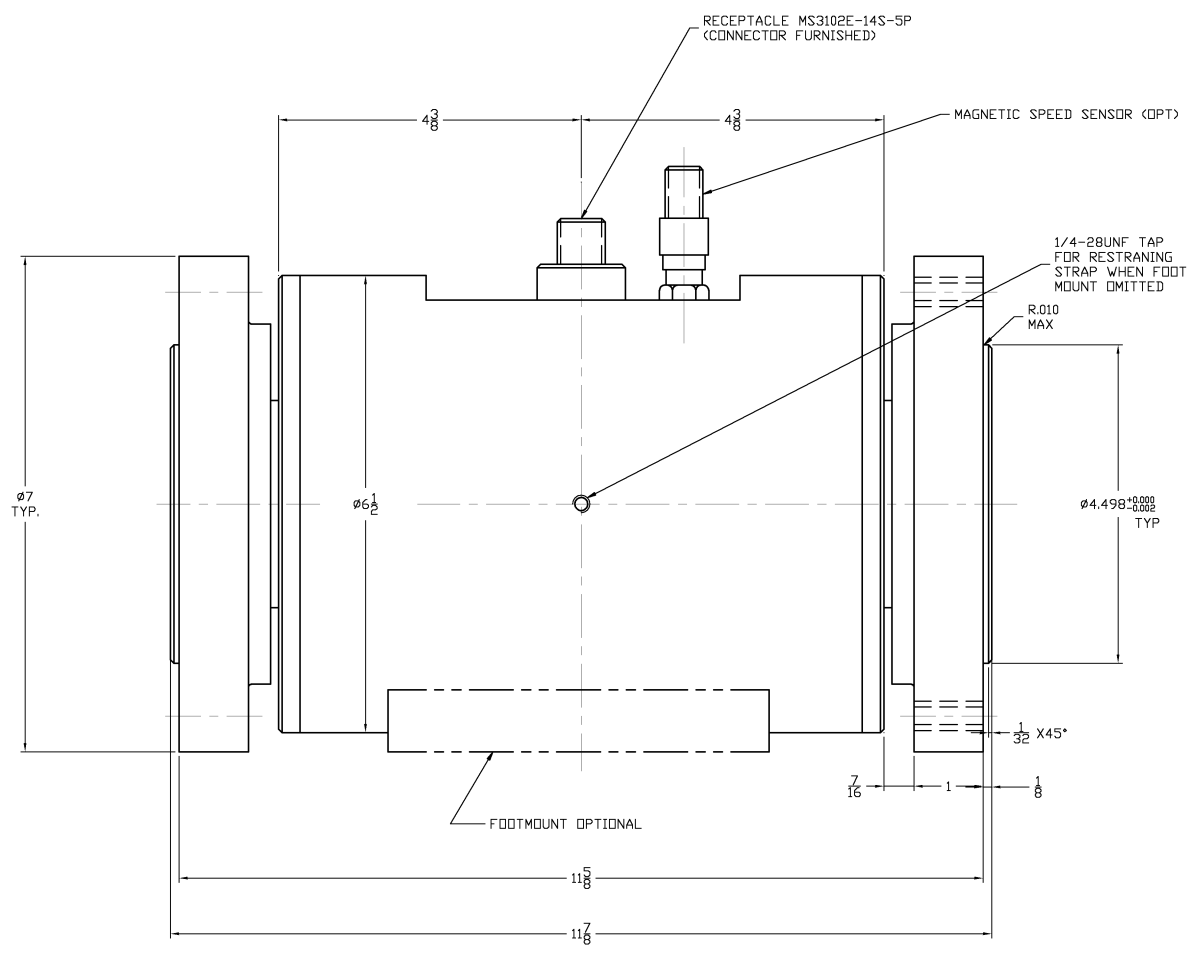


NOTICE TO PERSONS RECEIVING THIS DRAWING AND/OR TECHNICAL INFORMATION
 Lebow Products claims proprietary rights to the material disclosed herein. This drawing and/or technical information is issued in confidence for engineering information only and may not be reproduced or used to manufacture anything shown or referred to herein without direct written permission from Lebow Products to the user. This drawing and/or technical information is the property of Lebow Products and is loaned for mutual assistance, to be returned when its purpose has been served.



G	ADDED OPTIONAL FOOTMOUNT	9/10/04
F	REDRAW ON CAD	12/04/03
SYM.	REVISION	DATE

DET. NO.	PART NO.	DESCRIPTION	REV'D.
		Lebow Products	Lebow Products Troy, Michigan
UNLESS OTHERWISE SPECIFIED			
LINEAR DIMENSIONS ARE IN INCHES		REMOVE ALL BURRS & SHARP EDGES	
ANGULAR DIMENSIONS ARE IN DEGREES		SURFACE FINISH 125 ✓	
DIMENSION LIMITS HELD AFTER PLATING			
TOLERANCES		DR. BY:	CHK'D. BY:
DRILLED HOLES - .000 + .007	TWO PLACE DECIMALS ± .005	SALLY	
SCALE:	REF. DWG.	DATE:	DATE:
FULL	D-22586	12/04/03	
	FRACTIONAL DIMENSIONS ± 1/64	MAT'L:	MODEL:
	~		1641
TITLE: INSTALLATION~ ROTARY TRANSFORMER TORQUE SENSOR			DRAWING NO. D-1641-D
			REV.

MODEL NO	TORQUE CAP	"A" DIA	OVERLAP CAPACITY	C-1102-D
1102-50	50 IN OZ	.375	150 IN OZ	
1102-100	100 IN OZ	.375	300 IN OZ	
1102-200	200 IN OZ	"	600 IN OZ	
1102-500	500 IN OZ	"	1000 IN OZ	
1102-1000	1000 IN OZ	"	1500 IN OZ	

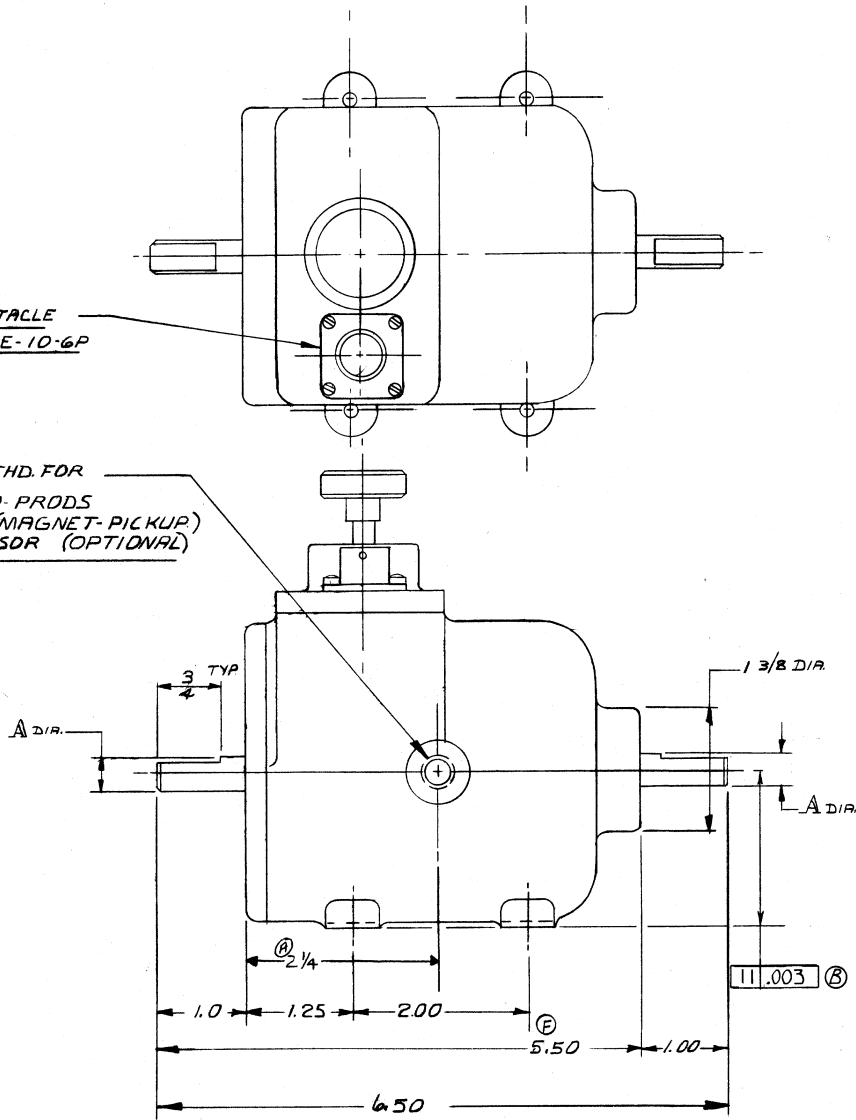
.250 DIA. SHAFT
OPTIONAL

SPECIFICATIONS S-1102 (D)

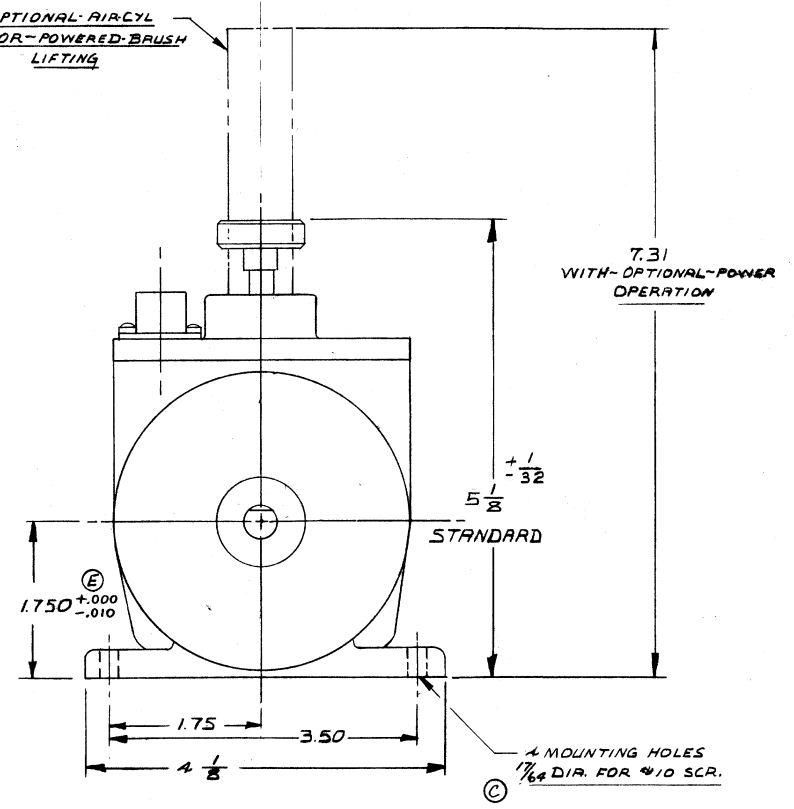
CAPACITY ~ SEE CHART.
OVERLOAD ~ MECH. OVERLOAD PROTECTION
SPEED ~ 20,000 RPM.
BRIDGE RESISTANCE ~ 350 OHMS
MAX. BRIDGE VOLTAGE - 20 VOLTS.
OUTPUT ~ VOLTAGE ~ 2 MV/VOLTS. NOMINAL.

RECEPTACLE
PT02E-10-6P

$\frac{3}{8}$ - 24 NF THD. FOR
ELECTRO. PRODS
A-17934 (MAGNET PICKUP)
SPEED SENSOR (OPTIONAL)



OPTIONAL AIR CYL
FOR POWERED BRUSH
LIFTING



DET. No	PART No	DESCRIPTION	REQ'D
F		DIM. WAS 4.50 ECN 204110	
E		ADDED TOLERANCE DEN 5131	
D		ADDED PERF. SPEC.	
C		WAS .20 ECN 3328	
B	ECN 2702	GH 5476	
A	ADDED DIM.	M.L. 8/24/77	
Z	REDRAWN	H.S.S. 1/14/77	
SYM.	REVISION	DATE	

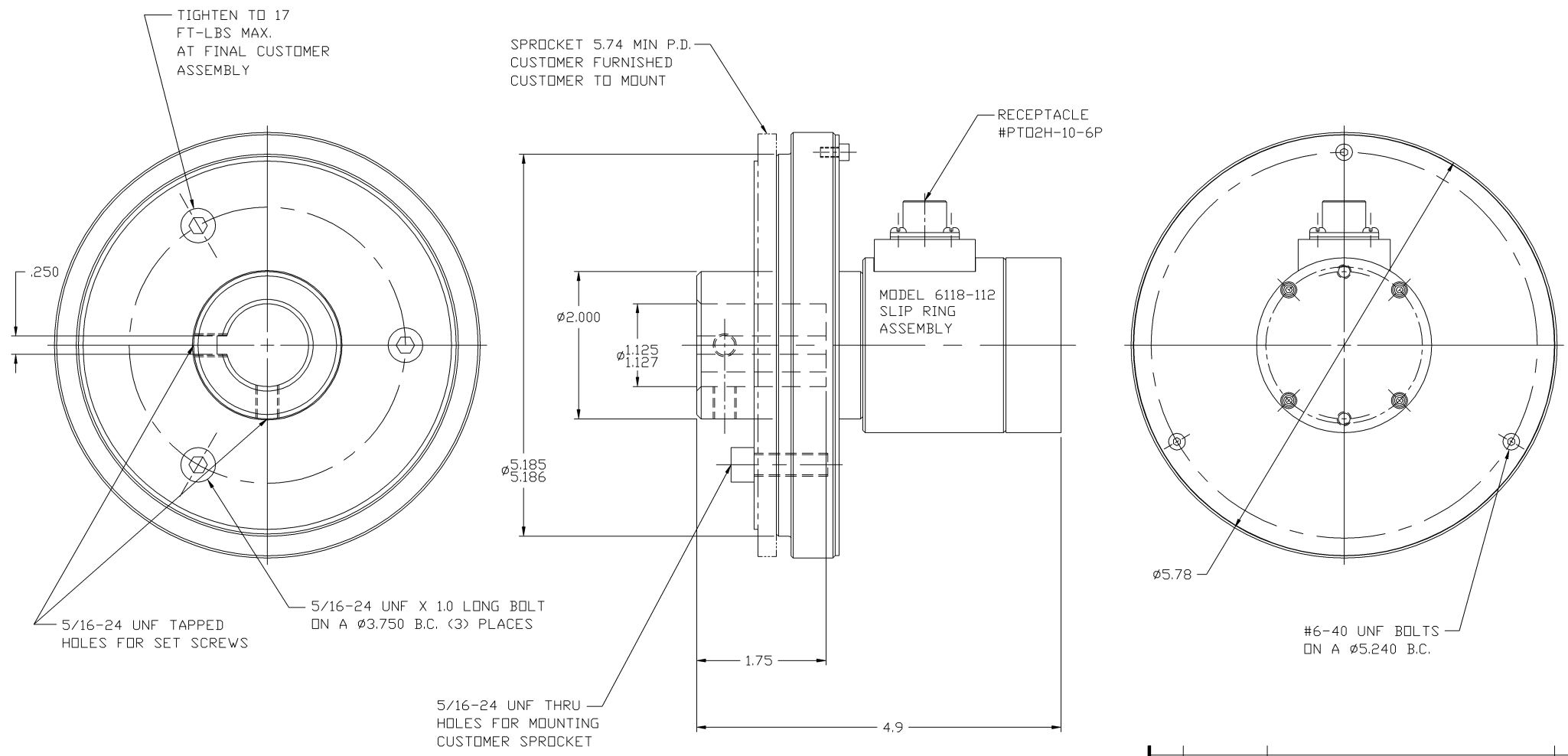
MINIATURE ~ TORQUE ~ PICK-UP
FULLY ENCLOSED ~ BRUSH LIFTERS.

SCALE: FULL DRAWN BY: D. HAYMAN SEE DWG. E-10456
DATE: A-2-60 CHK'D BY: MODEL: 1102 JOB NO.

UNLESS OTHERWISE SPECIFIED:
TOLERANCE ON FRACTIONS ± 1/64 TOLERANCE ON DRILLED HOLES ± .002
TWO PLACE DECIMALS ± .010 REMOVE ALL BURRS & SHARP EDGES
THREE PLACE DECIMALS ± .005 DIMENSION LIMITS HELD AFTER PLATING
ANGLES ± 0°30' SURFACE FINISH 125/

LEBOW ASSOCIATES, INC. DRAWING NO. C-1102-D
TROY, MICHIGAN

R.S.P.M.

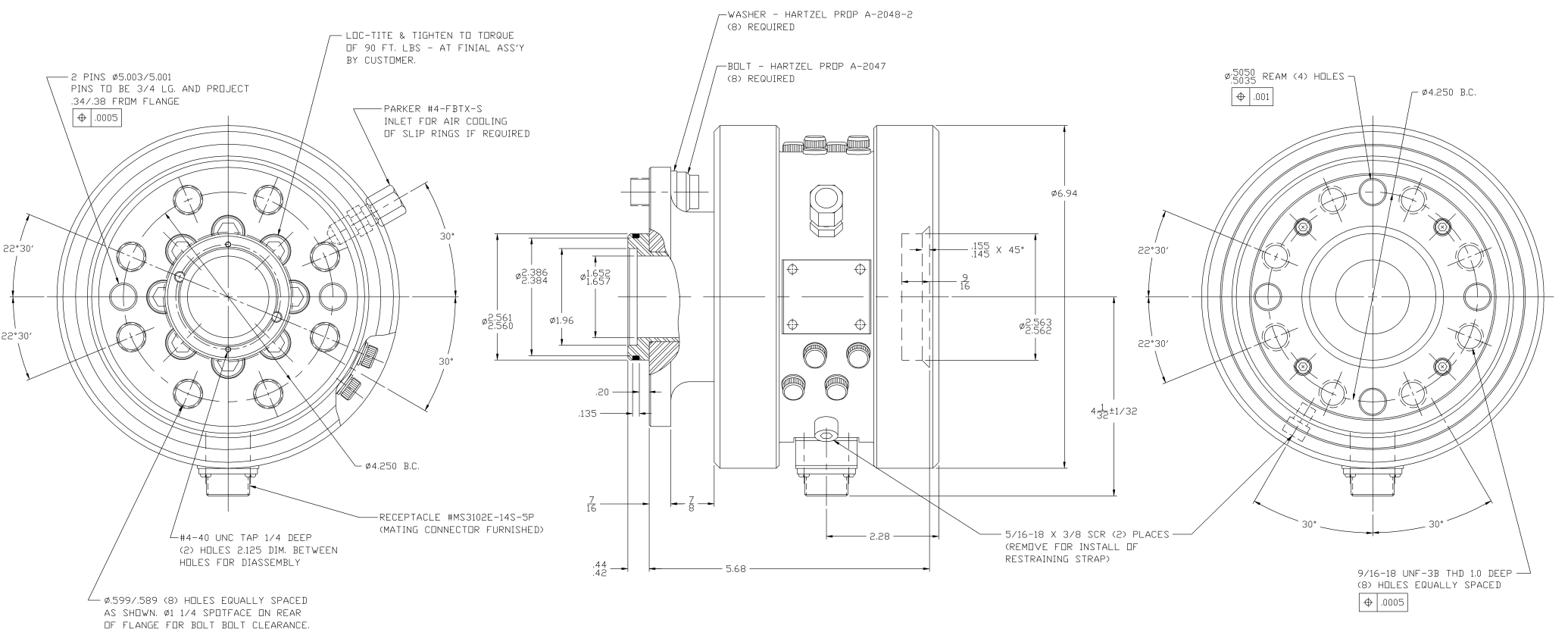


"NOTICE TO PERSONS RECEIVING THIS DRAWING AND/OR TECHNICAL INFORMATION"
 Lebow Products claims proprietary rights to the material disclosed herein. This drawing and/or technical information is issued in confidence for engineering information only and may not be reproduced or used to manufacture anything shown or referred to herein without direct written permission from Lebow Products to the user. This drawing and/or technical information is the property of Lebow Products and is loaned for mutual assistance, to be returned when its purpose has been served.

DET. NO.	PART NO.	DESCRIPTION	REV'D.
		Lebow Products Lebow Products Troy, Michigan	
UNLESS OTHERWISE SPECIFIED LINEAR DIMENSIONS ARE IN INCHES REMOVE ALL BURRS & ANGULAR DIMENSIONS ARE IN DEGREES SHARP EDGES DIMENSION LIMITS HELD AFTER PLATING SURFACE FINISH 125 ✓			
TOLERANCES			
DRILLED HOLES - .000 + .007	TWO PLACE DECIMALS ± .005	THREE PLACE DECIMALS ± .002	ANGLES ± 0° 30'
SCALE: NONE	REF. DWG. C-30029	FRACTIONAL DIMENSIONS 1/164	MATL. -
TITLE: SPROCKET SENSOR O.D.		DR. BY: CW	ENGR. GPH
DATE: 9/7/82		CHK'D. BY: GPH	ENGR. GPH
ECN NO.		DATE: 9/22/82	DATE: 9/22/82
SYM.		MODEL: 1388	REV.
G F		DRAWING NO. C-30028	

REVISIONS	DESCRIPTION
1	ISSUE
2	REPAIRMAN ON CAD
3	DATE
4	APPV'D.
5	CHG'D.
6	ECN NO.
7	SYM.

"NOTICE TO PERSONS RECEIVING THIS DRAWING AND/OR TECHNICAL INFORMATION"
 Lebow Products Corp. proprietary rights to the technical details herein, the drawing and/or technical information shall be confidence for engineering information only and may not be reproduced or used for manufacture without prior written permission from Lebow Products to the user. The drawing and/or technical information is the property of Lebow Products and is loaned for mutual assistance, to be returned when its purpose has been served.



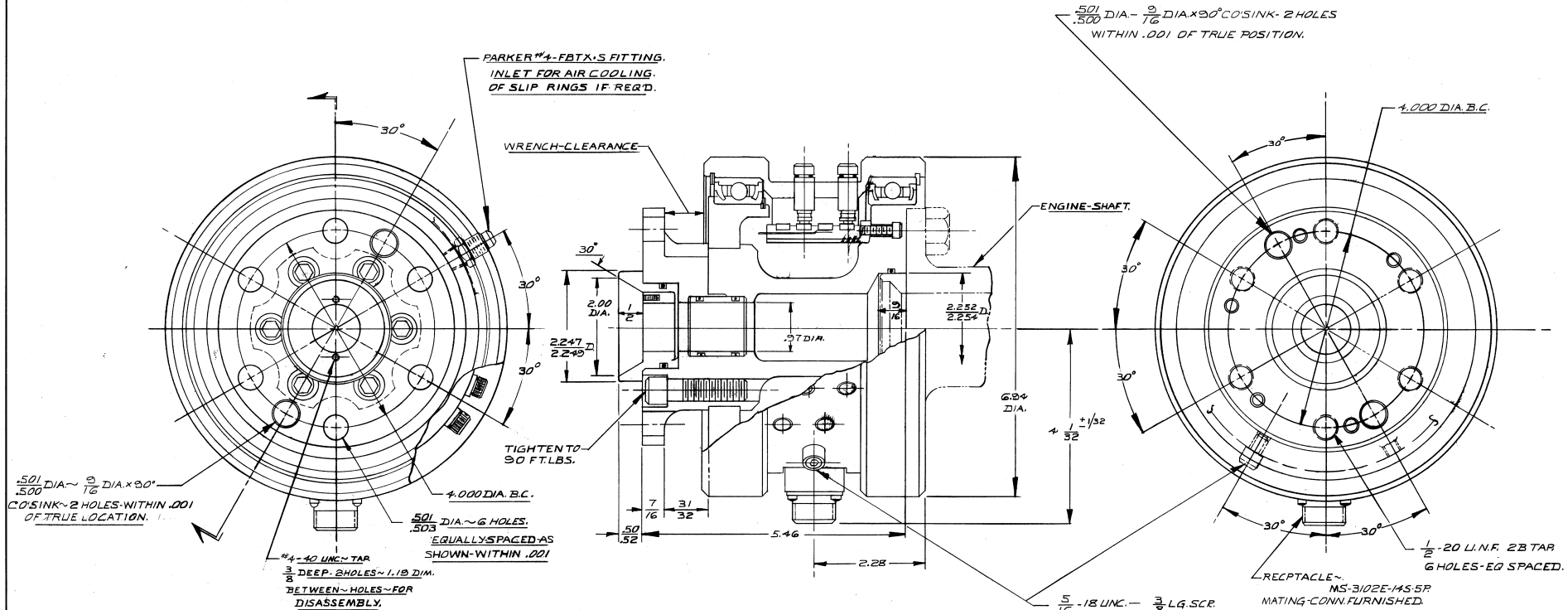
NOTES:
 1.) GROUND TEST ONLY
 2.) GROUND RATED

SPECIFICATIONS:
 OUTPUT: 15 MV.V NOM.
 SPEED: 3500 R.P.M. MAX.



REV. NO.	PART NO.	DESCRIPTION	REV.
D-27473		Lebow Products Troy, Michigan	
UNLESS OTHERWISE SPECIFIED LINEAR DIMENSIONS ARE IN INCHES REMOVE ALL BURRS & ANGULAR DIMENSIONS ARE IN DEGREES SHARP EDGES DIMENSION LIMITS HELD AFTER PLATING SURFACE FINISH 125 ✓			
TOLERANCES			
DRILL Holes	TWO PLACE DECIMALS	THREE PLACE DECIMALS	ANGLES
±.005	±.002	±.001	+0.30°
SCALE	REF. SVGS	FRACTIONAL DIMENSIONS	DATE
NONE	D-27474	1/32	3/15/79
TITLE	EON NO.	MODEL	REV.
INSTALLATION-TURBO-PROP TORQUE PICK-UP		1242-108	
		DRAWING NO.	
		D-27473	

SCHEMATIC
REV 10/68



5/16 DIA. - 3/16 DIA. x 90° COSINK - 2 HOLES - WITHIN .001 OF TRUE LOCATION.

PARKER #4-FBTX-S FITTING. INLET FOR AIR COOLING. OF SLIP RINGS IF REQ'D.

WRENCH-CLEARANCE

TIGHTEN TO 90 FT.LBS.

4.000 DIA. B.C.
5/16 DIA. - 6 HOLES, EQUALLY SPACED AS SHOWN - WITHIN .001 BETWEEN HOLES - FOR DISASSEMBLY.

4 - 40 UNC - TAR 3/8 DEEP - 2 HOLES - 1.19 DIM.

MODEL NO	FLIGHT TEST TORQUE-RATING IN LBS.	GROUND TEST TORQUE-RATING IN LBS.	OUTPUT TO FLIGHT TEST TORQUE-RATING	SHEAR LOAD.	TORSIONAL STRESS FLIGHT TEST TORQUE-RATING	ALLOWABLE BENDING MOMENT - IN LBS. FLIGHT-TEST.	T/I IN LB/RAD.	MAX. SPEED R.P.M.
1308-10K	10,000	15,000	1.0 MV/V	3,000	12,000	11,500	3.54 x 10 ⁶	3500
1308-13K	13,000	20,000	1.0 MV/V	4,000	12,000	14,500	4.10 x 10 ⁶	3500
1308-16K	16,000	24,000	1.0 MV/V	4,500	12,000	16,000	4.33 x 10 ⁶	3500
1308-20K	20,000	30,000	1.0 MV/V	5,000	12,000	18,000	4.74 x 10 ⁶	3500

Ⓞ FLIGHT TESTED

REV. NO.	PART NO.	DESCRIPTION	REQ'D.
		OUTSIDE DIMENSIONS - OF PROP. SHAFT - TORQUE - PICK UP	
		RECALL FROM DRAWING 1308-D	
		DATE: 2/25/50	JOB NO.
		DESIGNED BY: [Signature]	
		DATE: 2/25/50	

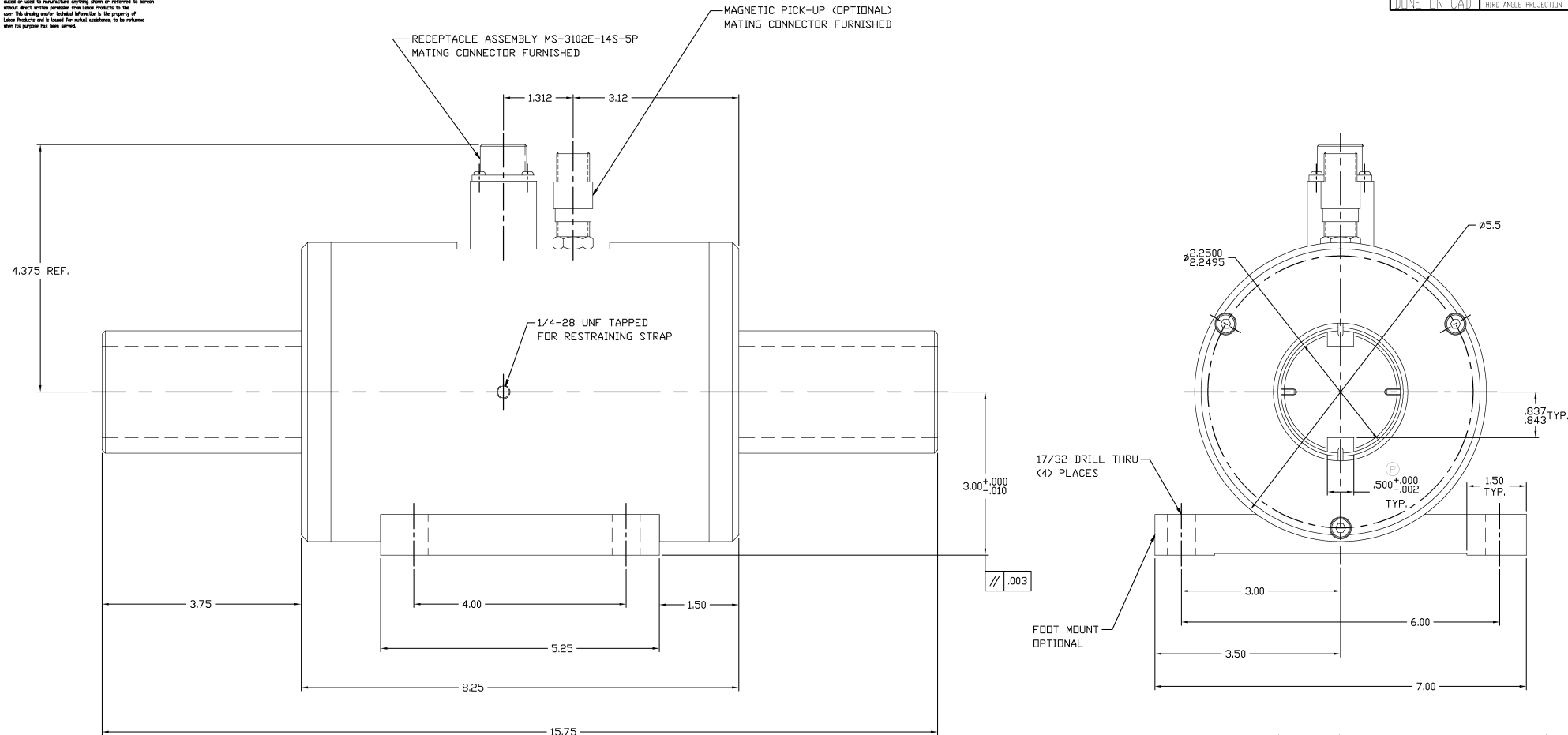
L	ADD'D FLIGHT TESTED	DATE	BY
K	ECN 2802	8-74	[Signature]
J	REDRAWN HAS	7-58	[Signature]

UNLESS OTHERWISE SPECIFIED:
 TOLERANCE ON FRACTIONS ± .004
 TOLERANCE ON DRILLED HOLES ± .004
 REMOVE ALL BURR & SHARP EDGES
 DIMENSION LINES HELD AFTER FLATTING
 SURFACE FINISH 125/

LEBOW ASSOCIATES, INC. TROY, MICHIGAN D-1308-D

NOTICE TO PERSONS RECEIVING THIS DRAWING AND/OR TECHNICAL INFORMATION:
 Lebow Products shall retain all rights in the material disclosed herein. The drawing and/or technical information is issued in confidence for engineering information only and may not be reproduced or used by manufacturer, supplier, dealer or person without direct written permission from Lebow Products to the contrary. The drawing and/or technical information is the property of Lebow Products and is loaned for actual assistance, to be returned when the purpose has been served.

DO NOT SCALE DRAWING	D-1606-D	REV
ALL CHANGES TO DRAWING MUST BE DONE IN C.A.D.	THIRD ANGLE PROJECTION	



1606-20K	20,000 L.B. IN.	300%
1606-10K	10,000 L.B. IN.	300%
1606-5K	5,000 L.B. IN.	300%
MODEL	CAPACITY	OVERLOAD CAP.

REV. NO.	PART NO.	DESCRIPTION	QTY.
		Lebow Products Lebow Products Troy, Michigan	
UNLESS OTHERWISE SPECIFIED			
LINEAR DIMENSIONS ARE IN INCHES		REMOVE ALL BURRS & SHARP EDGES	
ANGULAR DIMENSIONS ARE IN DEGREES		SURFACE FINISH 125 ✓	
DIMENSION LIMITS HELD AFTER PLATING			
TOLERANCES			
DRILLED HOLES	TWO PLACE DECIMALS	THREE PLACE DECIMALS	ANGLES
±.015	±.001	±.0005	± 0.30°
DATE	APP'D.	CHK'D.	ENGR.
4/20/79			
SCALE	REF. DIMS.	FRACTIONAL DIMENSIONS	MATL.
NONE	D-27623		1606
TITLE:	DRAWING NO.		REV.
O.D. DRAWING	D-1606-D		