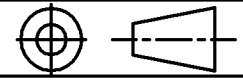


DO NOT SCALE
DRAWING

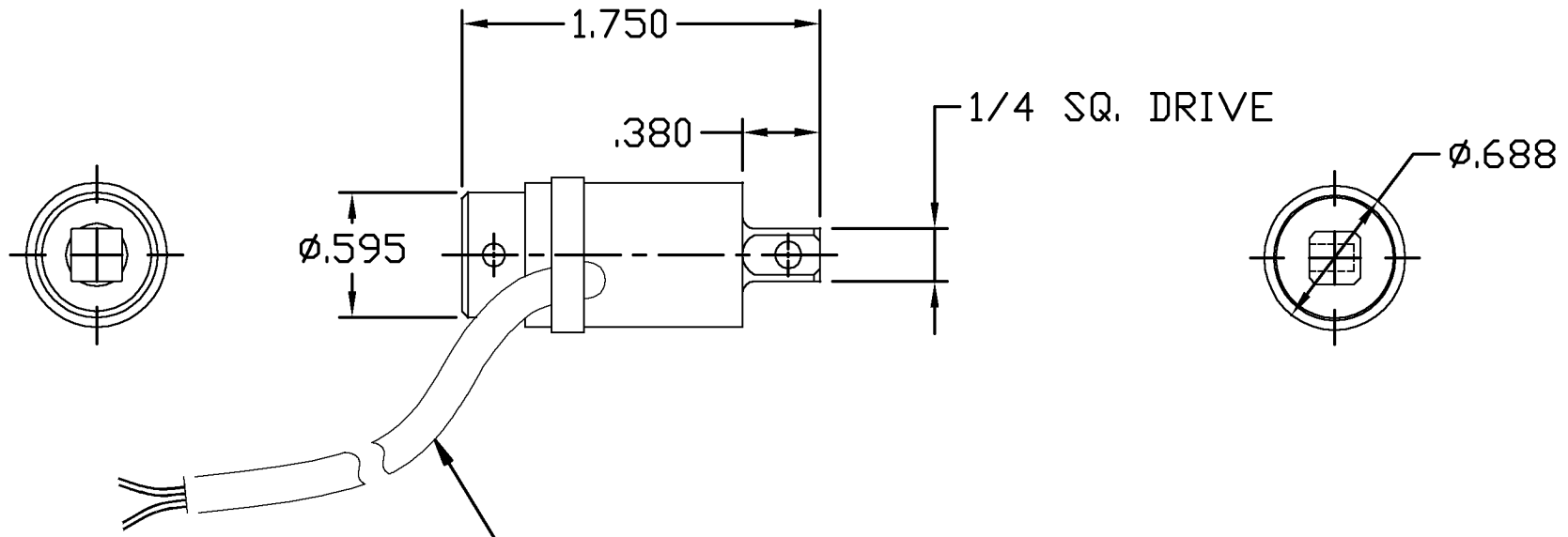
A-36085

REV.

ALL CHANGES TO
DRAWING MUST BE
DONE ON CAD



THIRD ANGLE PROJECTION



4 CONDUCTOR SHIELDED CABLE

DET. NO.	PART NO.	DESCRIPTION	REQ'D.
		Lebow Products Troy, Michigan	
UNLESS OTHERWISE SPECIFIED LINEAR DIMENSIONS ARE IN INCHES ANGULAR DIMENSIONS ARE IN DEGREES DIMENSION LIMITS HELD AFTER PLATING			
TOLERANCES		DR. BY: KJB	CHK'D. BY: ENGR.
DRILLED HOLES ±0.007	TWO PLACE DECIMALS ±0.010	THREE PLACE DECIMALS ±0.005	ANGLES ± 0 30'
SCALE: NONE	REF. DWG. B-36083	FRACTIONAL DIMENSIONS ± 1/64	MAT'L. NOTED
DATE: APPV'D. CHG'D. ECN NO. SYM.		DATE: 5/9/02	MODEL: 2133-301
TITLE: O.D.		DRAWING NO. A-36085	REV.

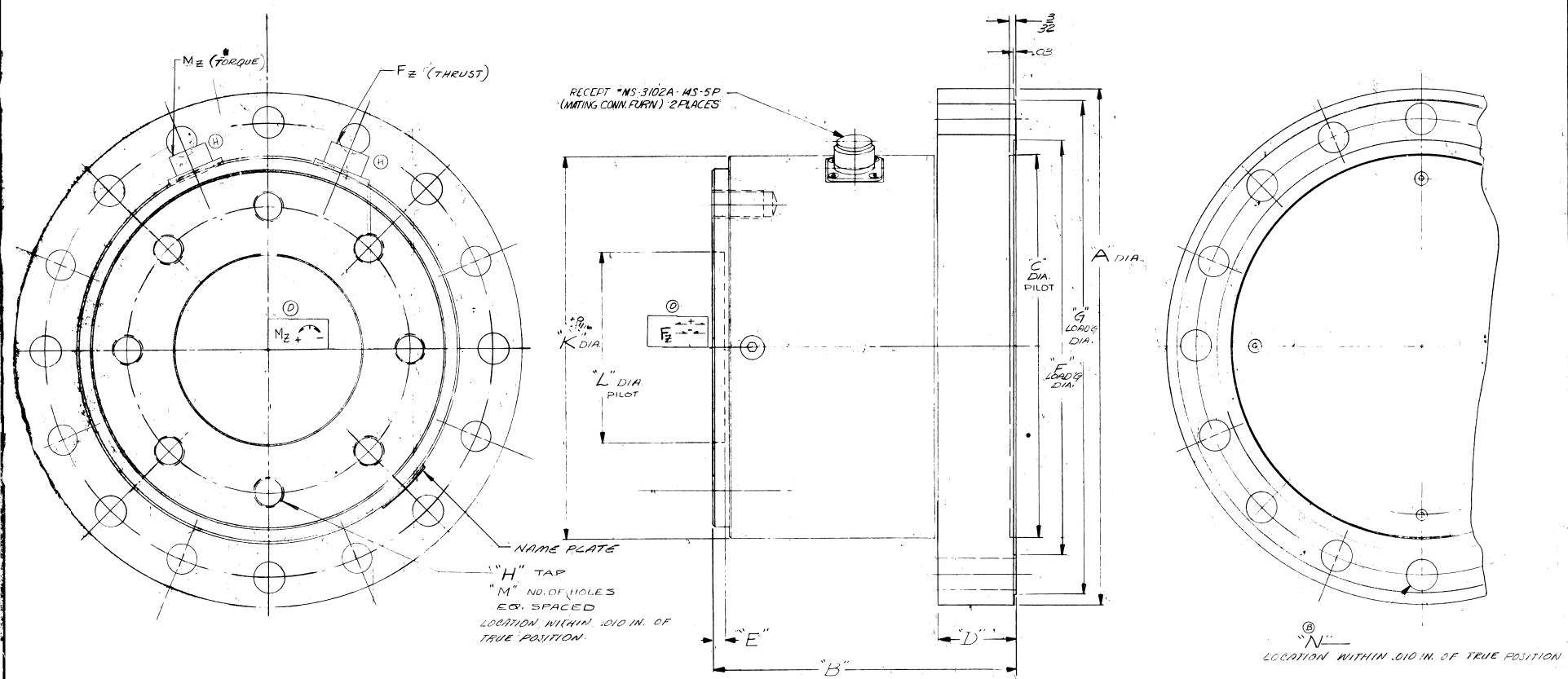
**"NOTICE TO PERSONS RECEIVING THIS
DRAWING AND/OR TECHNICAL INFORMATION"**

Lebow Products claims proprietary rights to the material disclosed hereon. This drawing and/or technical information is issued in confidence for engineering information only and may not be reproduced or used to manufacture anything shown or referred to hereon without direct written permission from Lebow Products to the user. This drawing and/or technical information is the property of Lebow Products and is loaned for mutual assistance, to be returned when its purpose has been served.

DESCRIPTION REVISIONS

N	ADDED -123	7-1-92
P	ADDED -126	4-20-92
R	ADDED 124	8/2/99

D-17358



MODEL NO	A	B	C	D	E	F	G	H	J	K	L	M	N	①	②	③	④	⑤	⑥	⑦	⑧	⑨	⑩	
6467-124	7 3/8	5.25	5.246 5.248	1 3/4	1/4	5 7/8	7 1/8	1/2-13 UNC-3B ON B.C. 3/4 DEEP	22 1/2	5 7/16	2.500/2.502	4	27/64 DIA. 16 HOLES ON A 6.500 B.C. EQ SPACED	2,500	5,000	①	②	③	④	⑤	⑥	⑦	⑧	
6467-126	7 3/8	5.25	5.246 5.248	1 3/4	1/4	5 7/8	7 1/8	1/2-13 UNC-3B ON 4.000 B.C. 3/4 DP	22 1/2	5 7/16	2.500/2.502	4	27/64 DIA. 16 HOLES ON A 6.500 B.C. EQ SPACED	1,000	10,000	①	②	③	④	⑤	⑥	⑦	⑧	
6467-123	7 3/8	5.25	5.246 5.248	2 3/4	1/4	5 7/8	7 1/8	1/2-13 UNC-3B ON 4.000 B.C. 3/4 DP	22 1/2	5 7/16	2.500/2.502	4	27/64 DIA. 16 HOLES ON A 6.500 B.C. EQ SPACED	50 N·m (442.5 IN·LB)	20 kN (4494 LBS)	①	②	③	④	⑤	⑥	⑦	⑧	
6467-122	7 3/8	5.25	5.246 5.248	2 3/4	1/4	5 7/8	7 1/8	1/2-13 UNC-3B ON 4.000 B.C. 3/4 DP	22 1/2	5 7/16	2.500/2.502	4	27/64 DIA. 16 HOLES ON A 6.500 B.C. EQ SPACED	500 N·m (4225 IN·LB)	63 kN (14,163 LBS)	①	②	③	④	⑤	⑥	⑦	⑧	
6467-121	7 3/8	5.25	5.246 5.248	2 3/4	1/4	5 7/8	7 1/8	1/2-13 UNC-3B ON 4.000 B.C. 3/4 DP	22 1/2	5 7/16	2.500/2.502	4	27/64 DIA. 16 HOLES ON A 6.500 B.C. EQ SPACED	200 N·m (1,770 IN·LB)	63 kN (14,163 LBS)	①	②	③	④	⑤	⑥	⑦	⑧	
6467-116	7 3/8	5.25	5.246 5.248	2 3/4	1/4	5 7/8	7 1/8	1/2-13 UNC-3B ON 4.000 B.C. 3/4 DP	22 1/2	5 7/16	2.500/2.502	4	27/64 DIA. 16 HOLES ON A 6.500 B.C. EQ SPACED	2,200/5000	22,000/25,000	①	②	③	④	⑤	⑥	⑦	⑧	
6468-111	10 3/4	8.500	7.996 7.998	2 1/4	1/4	8 1/2	10 3/8	1/2-13 UNC-3B ON 4.000 B.C. 3/4 DEEP	11 1/4	8.0	4.000/4.004	8	1/16 DIA. 16 HOLES ON A 11.000 B.C. EQ SPACED	20,000	20,000	①	②	③	④	⑤	⑥	⑦	⑧	
6467-105	7 3/8	5.25	5.246 5.248	1 3/4	1/4	5 7/8	7 1/8	1/2-13 UNC-3B ON 4.000 B.C. 3/4 DEEP	22 1/2	5 7/16	2.500/2.502	4	27/64 DIA. 16 HOLES ON A 6.500 B.C. EQ SPACED	17K	25K	3K	5K	5K	6K	①	②	③	④	⑤
6468-107	10 3/4	8.500	7.996 7.998	2 1/4	1/4	8 1/2	10 3/8	1/2-13 UNC-3B ON 4.000 B.C. 3/4 DEEP	11 1/4	8.0	4.000/4.004	8	1/16 DIA. 16 HOLES ON A 11.000 B.C. EQ SPACED	20,000	25,000	①	②	③	④	⑤	⑥	⑦	⑧	
6470	10 3/4	11,000	7.996 7.998	3 3/4	1/4	13.0	15 1/2	1/2-13 UNC-3B ON 4.000 B.C. 3/4 DEEP	11 1/4	12"	5.000/5.004	12	1/16 DIA. 16 HOLES ON A 11.000 B.C. EQ SPACED	100,000	200,000	①	②	③	④	⑤	⑥	⑦	⑧	
6469	10 3/4	10,000	7.996 7.998	3.0	1/4	8 3/16	10 7/16	1/2-13 UNC-3B ON 4.000 B.C. 3/4 DEEP	11 1/4	8"	4.000/4.004	8	1/16 DIA. 16 HOLES ON A 11.000 B.C. EQ SPACED	50,000	100,000	①	②	③	④	⑤	⑥	⑦	⑧	
6468	10 3/4	8.500	7.996 7.998	2 1/4	1/4	8 1/2	10 3/8	1/2-13 UNC-3B ON 4.000 B.C. 3/4 DEEP	11 1/4	8"	4.000/4.004	8	1/16 DIA. 16 HOLES ON A 11.000 B.C. EQ SPACED	10,000	25,000	①	②	③	④	⑤	⑥	⑦	⑧	
6467	7 3/8	5.25	5.246 5.248	1 3/4	1/4	5 7/8	7 1/8	1/2-13 UNC-3B ON 4.000 B.C. 3/4 DP	22 1/2	5 7/16	2.500/2.502	4	27/64 DIA. 16 HOLES ON A 6.500 B.C. EQ SPACED	5,000	10,000	①	②	③	④	⑤	⑥	⑦	⑧	

SPECIFICATIONS
 OUTPUT @ RATED FATIGUE CAPACITY
 1.5 MV/VOLT NOM. (1 MV/VOLT FOR -123) ①
 BRIDGE RESISTANCE 700Ω

REV.	NO.	DATE	DESCRIPTION
M	ADDED -122	5-28-92	
L	ADDED -121	4-14-92	
K	ADDED NEW SENSOR	8-21-88	
J	ADDED 6467-116	5-28-88	
H	ECN 3117	7-27-87	
G	ECN 3095	11-25-86	
F	MODIFIED 6468-111	8-21-88	
E	ADDED 6467-105	6-16-79	
D	ECN 3455, 110	11-23-76	
C	ECN 2875	11-23-75	
B	ECN 2875	11-23-75	
A	ECN 2145	6-22-73	

INSTALLATION			
DATE	BY	DESCRIPTION	INITIALS

TORQUE & THRUST SENSORS			
MODEL NO	DATE	TESTED	BY

LOAD ASSOCIATED, INC.	
DESCRIPTION	DATE

D-17358

CHG.	REMARKS	DATE
	CORRECTED VIEWS	5/2/64
A	WAS TOOL - ADDED NOTE	3/9/64
B	WAS TO	6/10/60
C	ADDED FLANGE DISCONT.	3/16/76
D	ADDED 9K CAPACITY	6/25/82
E	ADDED 24K & 48K	8-14-87 TMW

C-2320-D

NOTICE TO PERSONS RECEIVING THIS DRAWING AND/OR TECHNICAL INFORMATION
 Eaton Corporation does not warrant fitness to the material described herein. This drawing and its technical information is issued in confidence for the exclusive use of the user and may not be reproduced or used for any other purpose without the written consent of Eaton Corporation. The drawing and/or technical information is the property of Eaton Corporation and is loaned for mutual assistance, to be returned when no longer has been needed.

SCANNED
 8/14/87

RECEPTACLE
 M5-3102A-145-5P

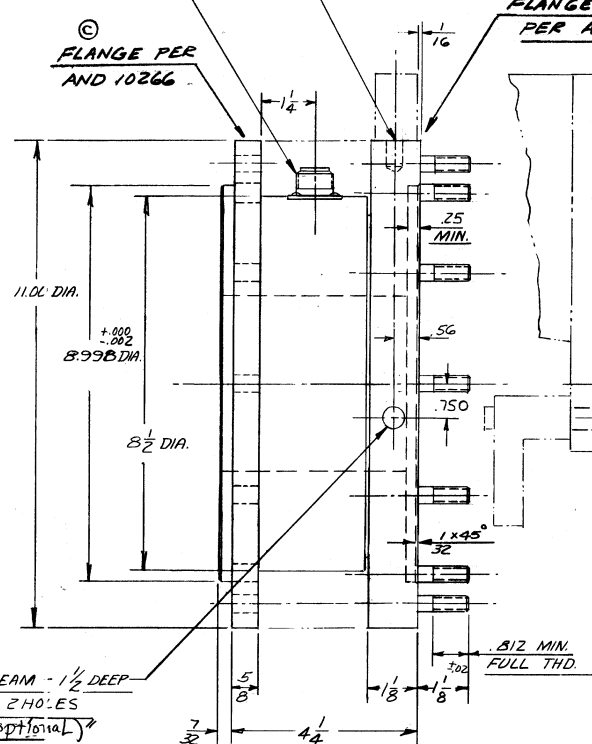
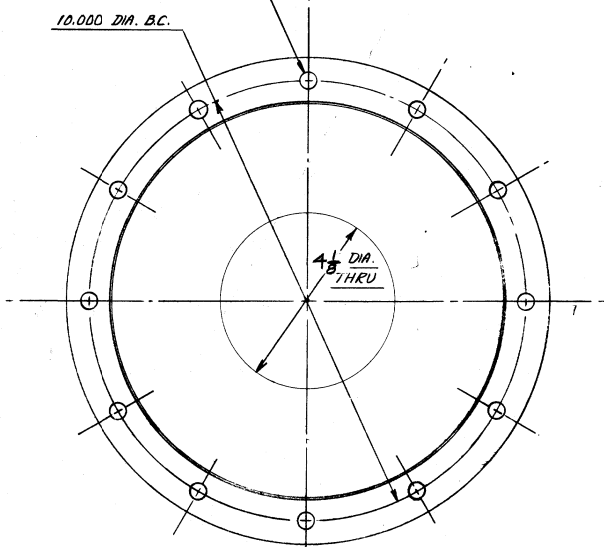
$\frac{3}{8}$ - 24 UNF-3A - 12 STUDS EQUALLY SPACED
 WITHIN .007 OF TRUE POSITION

$\frac{13}{32}$ DIA HOLE - THRU
 12 HOLES EQUALLY SPACED
 WITHIN .007 OF TRUE POSITION

FLANGE PER
 AND 10266

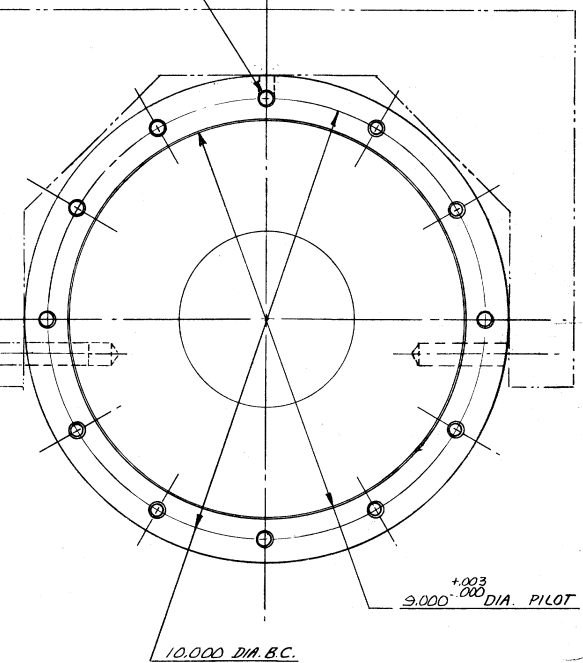
FLANGE & STUDS
 PER AND 20006

VERTICAL & FOR
 MOUNTING



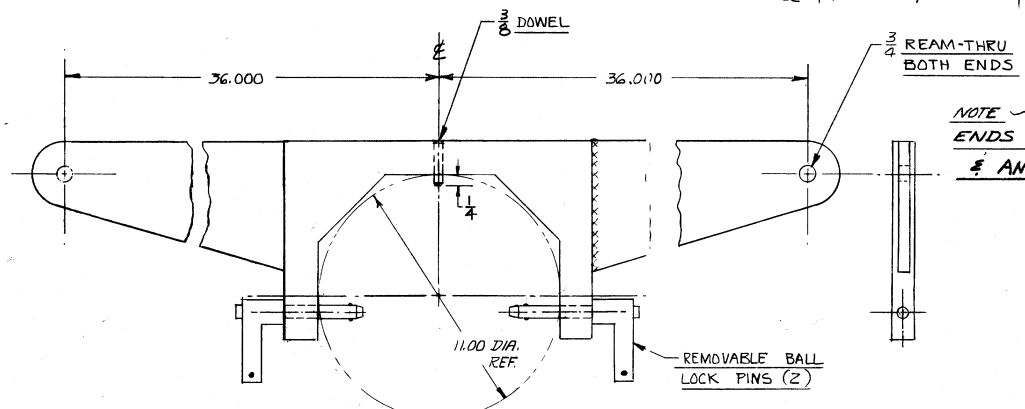
FLANGE & STUDS
 PER AND 20006

VERTICAL & FOR
 MOUNTING



$\frac{1}{2}$ REAM - $\frac{1}{2}$ DEEP
 2 HOLES

CALIBRATION ARM (optional)



NOTE -
 ENDS PER AND 20006 STD.
 & AND 10266 AS SHOWN

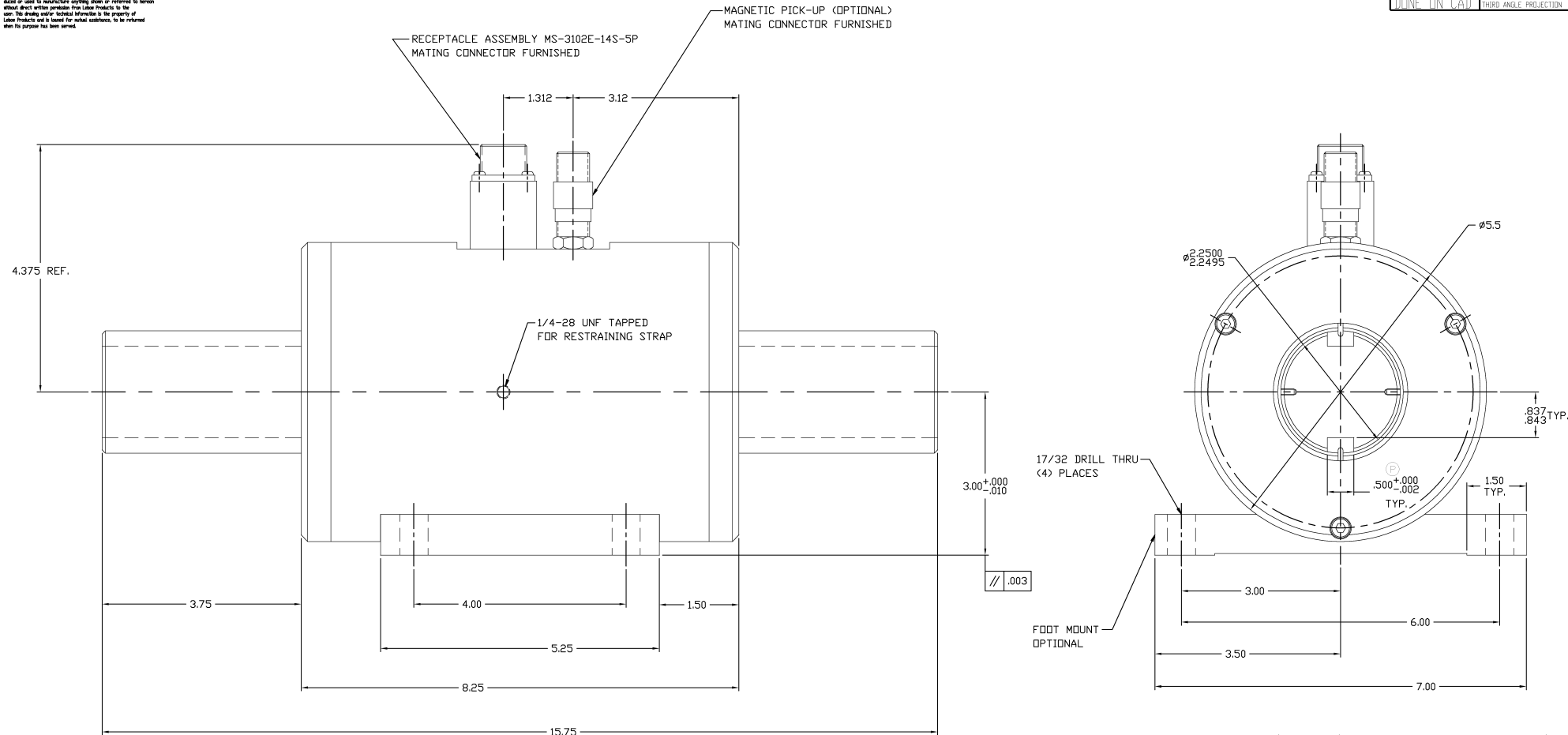
(E) CAPACITIES AVAILABLE: 9K, 12K, 24K, 36K, 48K IN LBS
 OUTPUT — 1.5 MV/VOLT @ RATED CAP
 BRIDGE — 350 OHMS

SPECIFICATIONS

DET. NO.	PART NO.	DESCRIPTION	REQ'D.
		OUTSIDE MOUNTING DIMENSIONS OF MODEL *2320 CO-AXIAL T.R.U.	
SCALE:	DRAWN BY: F. ZINK	REV. Dwg: 11751	MATL:
DATE: 11-2063	CHK'D BY:	MODEL: 2320	JOB NO:
UNLESS OTHERWISE SPECIFIED:			
TWO PLACE DECIMALS	: .010	TOLERANCES ON DRILL HOLES PER LEBOW SPEC / MG-101	
THREE PLACE DECIMALS	: .005	REMOVE ALL BURRS & SHARP EDGES	
ANGLES: 0° - 30°		DIMENSION LIMITS HELD AFTER PLATING	
		SURFACE FINISH 125	
LEBOW ASSOCIATES, INC. TROY, MICHIGAN			DRAWING NO. C-2320-D

NOTICE TO PERSONS RECEIVING THIS DRAWING AND/OR TECHNICAL INFORMATION:
 Lebow Products shall retain all rights in the material disclosed herein. The drawing and/or technical information is issued in confidence for engineering information only and may not be reproduced or used by manufacturer, supplier, dealer or person without direct written permission from Lebow Products to the contrary. The drawing and/or technical information is the property of Lebow Products and is loaned for actual assistance. To be returned when the purpose has been served.

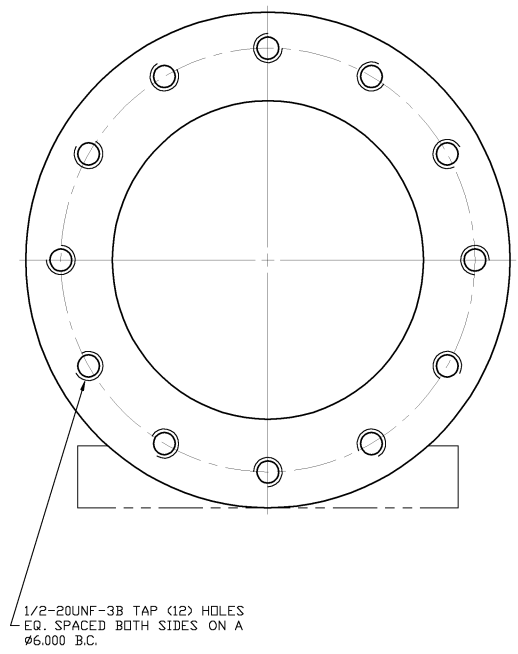
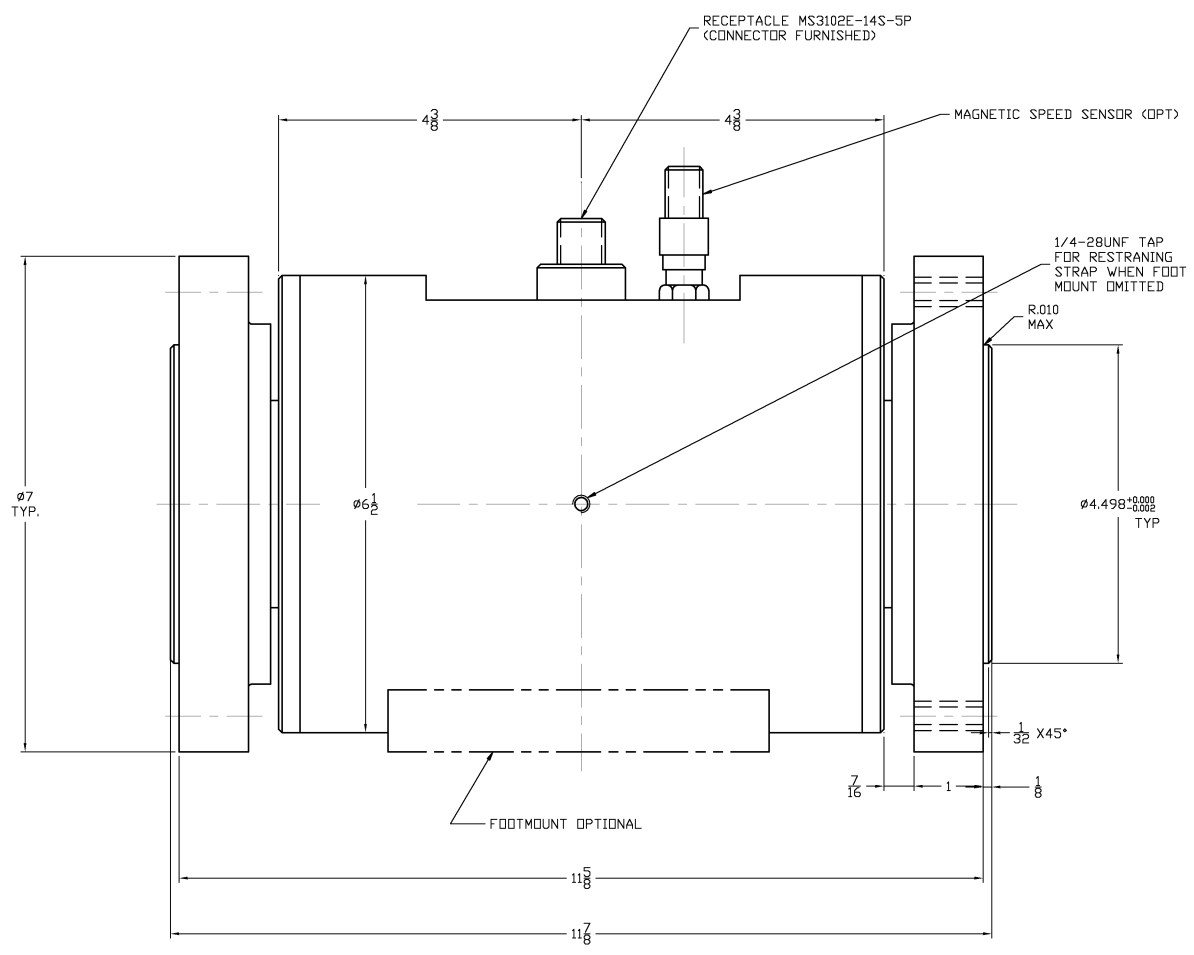
DO NOT SCALE DRAWING	D-1606-D	REV
ALL CHANGES TO DRAWING MUST BE DONE IN C.A.D.	THIRD ANGLE PROJECTION	



1606-20K	20,000 L.B. IN.	300%
1606-10K	10,000 L.B. IN.	300%
1606-5K	5,000 L.B. IN.	300%
MODEL	CAPACITY	OVERLOAD CAP.

REV. NO.	PART NO.	DESCRIPTION	QTY.
		Lebow Products Lebow Products Troy, Michigan	
UNLESS OTHERWISE SPECIFIED LINEAR DIMENSIONS ARE IN INCHES REMOVE ALL BURRS & ANGULAR DIMENSIONS ARE IN DEGREES SHARP EDGES DIMENSION LIMITS HELD AFTER PLATING SURFACE FINISH 125 ✓			
TOLERANCES			
DRILLED HOLES ±.015	TWO PLACE DECIMALS ±.01	THREE PLACE DECIMALS ±.005	ANGLES ± 0.30°
DATE	DATE	DATE	DATE
4/20/79			
SCALE	REF. DIMS	FRACTIONAL DIMENSIONS 1/64	MATL. 1606
NONE	D-27623		
TITLE: O.D. DRAWING			DRAWING NO. D-1606-D

NOTICE TO PERSONS RECEIVING THIS DRAWING AND/OR TECHNICAL INFORMATION
 Lebow Products claims proprietary rights to the material disclosed herein. This drawing and/or technical information is issued in confidence for engineering information only and may not be reproduced or used to manufacture anything shown or referred to herein without direct written permission from Lebow Products to the user. This drawing and/or technical information is the property of Lebow Products and is loaned for mutual assistance, to be returned when its purpose has been served.



G	ADDED OPTIONAL FOOTMOUNT	9/10/04
F	REDRAW ON CAD	12/04/03
SYM.	REVISION	DATE

DET. NO.	PART NO.	DESCRIPTION	REV'D.
Lebow Products		Lebow Products Troy, Michigan	
UNLESS OTHERWISE SPECIFIED LINEAR DIMENSIONS ARE IN INCHES REMOVE ALL BURRS & SHARP EDGES ANGULAR DIMENSIONS ARE IN DEGREES SURFACE FINISH 125 ✓ DIMENSION LIMITS HELD AFTER PLATING			
TOLERANCES		DR. BY: SALLY	CHK'D BY: ENGR.
DRILLED HOLES -000 +007	TWO PLACE DECIMALS ± .005	THREE PLACE DECIMALS ± .002	ANGLES ± 0 30'
SCALE: FULL	REF. DWG. D-22586	FRACTIONAL DIMENSIONS ± 1/64	MAT'L ~
DATE: 12/04/03		DATE:	DATE:
MODEL: 1641		DRAWING NO. D-1641-D	
TITLE: INSTALLATION~ ROTARY TRANSFORMER TORQUE SENSOR			REV.

MODEL NO	TORQUE CAP	"A" DIA	OVERLAP CAPACITY	C-1102-D
1102-50	50 IN OZ	.375	150 IN OZ	
1102-100	100 IN OZ	.375	300 IN OZ	
1102-200	200 IN OZ	"	600 IN OZ	
1102-500	500 IN OZ	"	1000 IN OZ	
1102-1000	1000 IN OZ	"	1500 IN OZ	

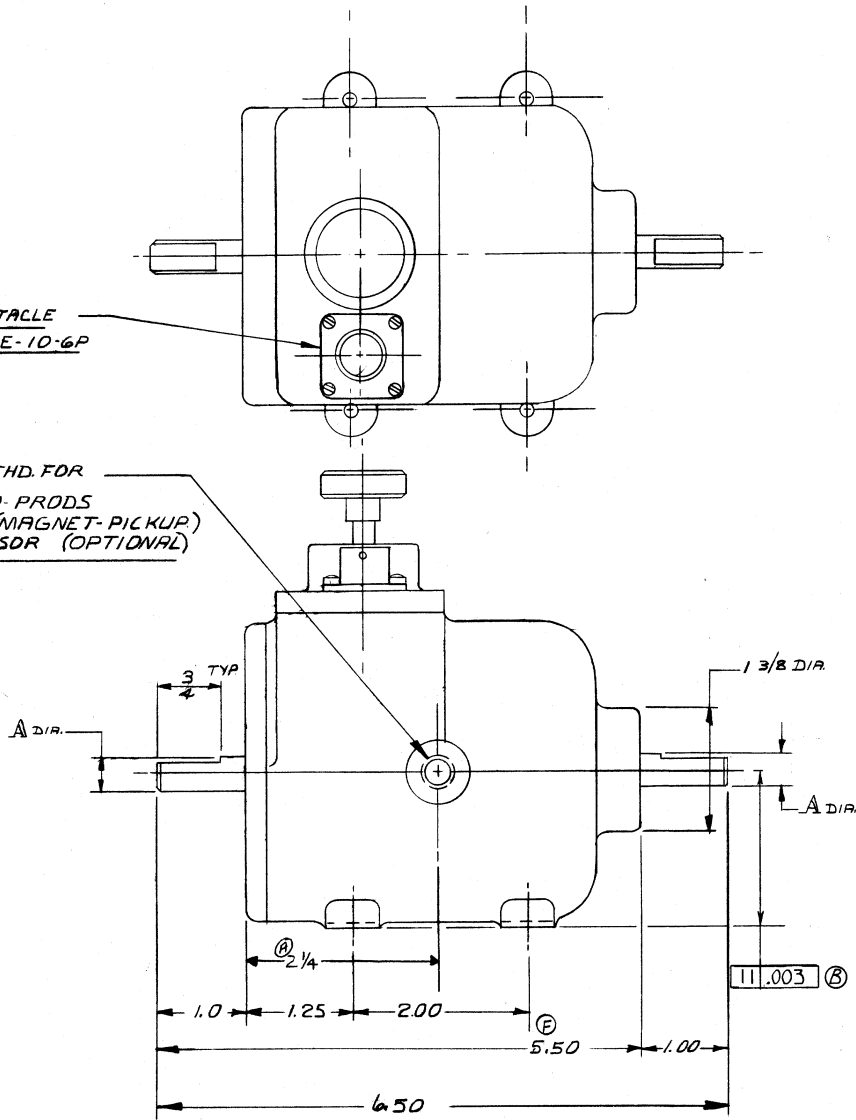
.250 DIA. SHAFT
OPTIONAL

SPECIFICATIONS S-1102 (D)

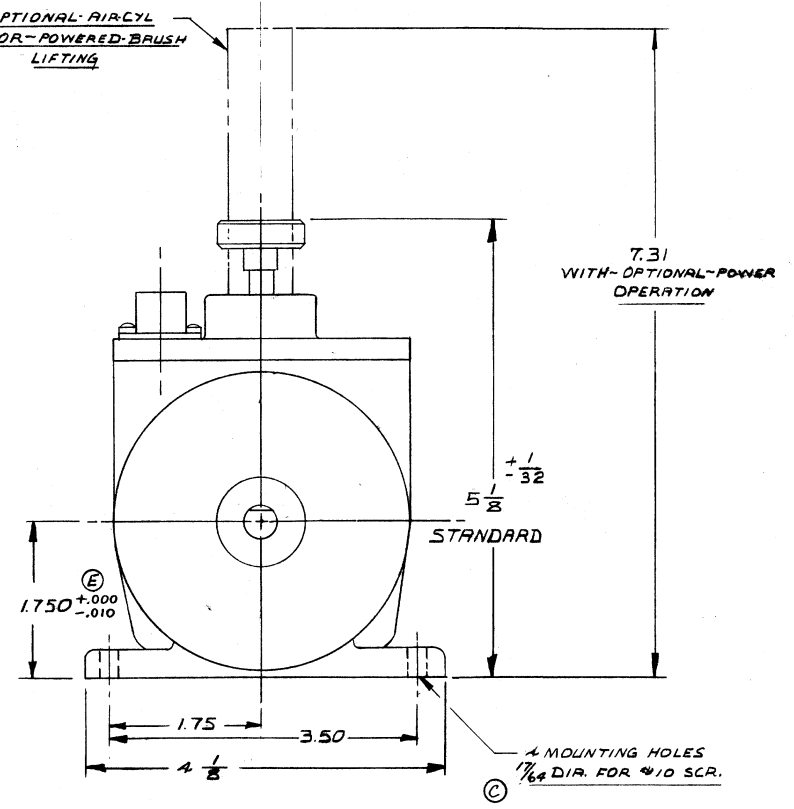
CAPACITY ~ SEE CHART.
OVERLOAD ~ MECH. OVERLOAD PROTECTION
SPEED ~ 20,000 RPM.
BRIDGE RESISTANCE ~ 350 OHMS
MAX. BRIDGE VOLTAGE - 20 VOLTS.
OUTPUT ~ VOLTAGE ~ 2 MV/VOLTS. NOMINAL.

RECEPTACLE
PT02E-10-6P

$\frac{3}{8}$ - 24 NF THD. FOR
ELECTRO. PRODS
A-17934 (MAGNET PICKUP)
SPEED-SENDR (OPTIONAL)



OPTIONAL AIR CYL
FOR POWERED BRUSH
LIFTING



DET. No	PART No	DESCRIPTION	REQ'D
F		DIM. WAS 4.50 ECN 204110	
E		ADDED TOLERANCE DEN 5131	
D		ADDED PERF. SPEC.	
C		WAS .20 ECN 3328	
B	ECN 2702 GH 5476		
A	ADDED DIM. M.L. 8/24/77		
Z	REDRAWN - H.S.S. 1/14/77		
SYM.	REVISION	DATE	

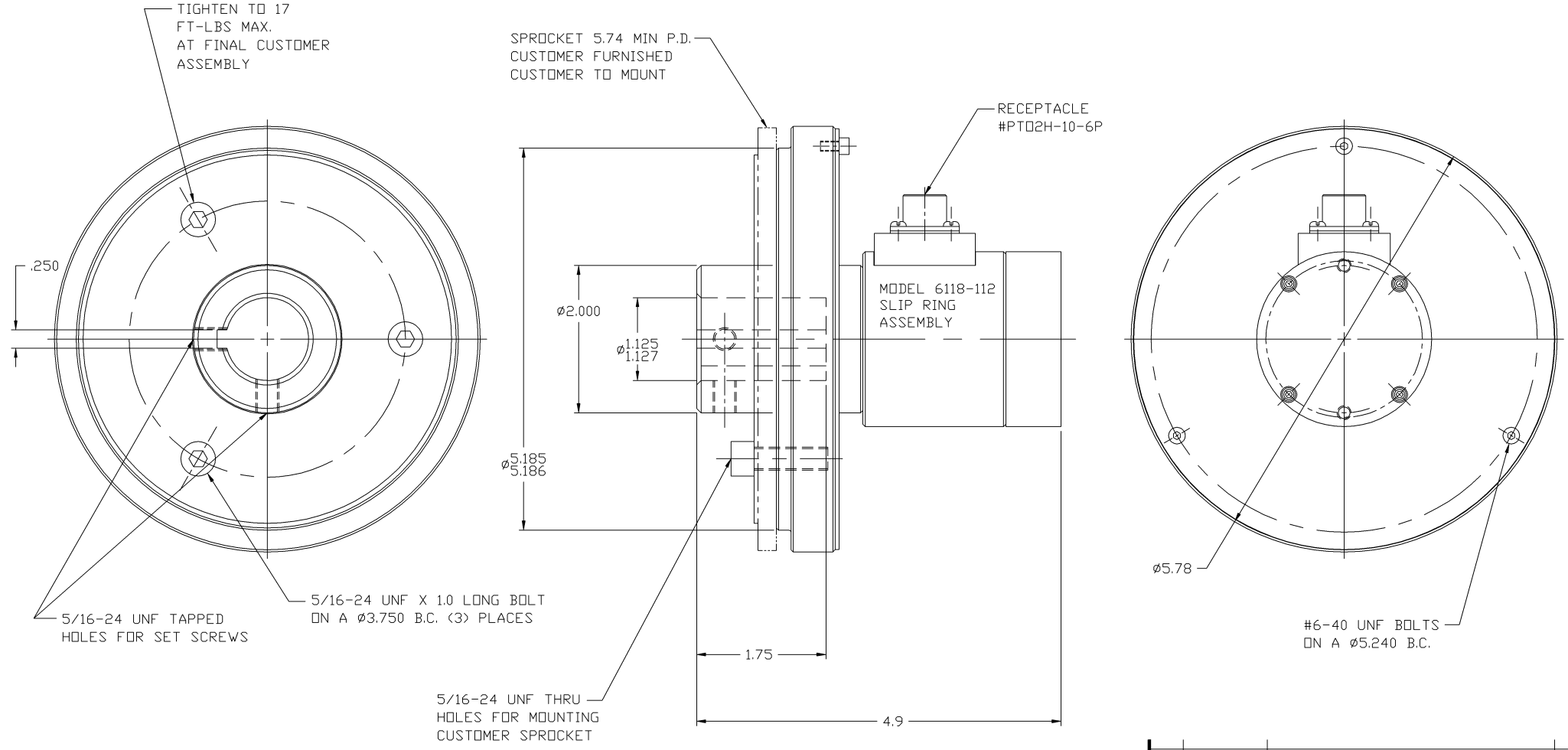
SCALE:	DRAWN BY:	CHK'D BY:	DATE:	MODEL:	JOB NO.:
FULL	D. HAYMAN		A-2-60	1102	

UNLESS OTHERWISE SPECIFIED:
TOLERANCE ON FRACTIONS ± 1/64
TWO PLACE DECIMALS ± .010
THREE PLACE DECIMALS ± .005
ANGLES ± 0°30'
TOLERANCE ON DRILLED HOLES ± .002
REMOVE ALL BURRS & SHARP EDGES
DIMENSION LIMITS HELD AFTER PLATING
SURFACE FINISH 125/7

LEBOW ASSOCIATES, INC.
TROY, MICHIGAN

DRAWING NO. C-1102-D

R.S.P.M.

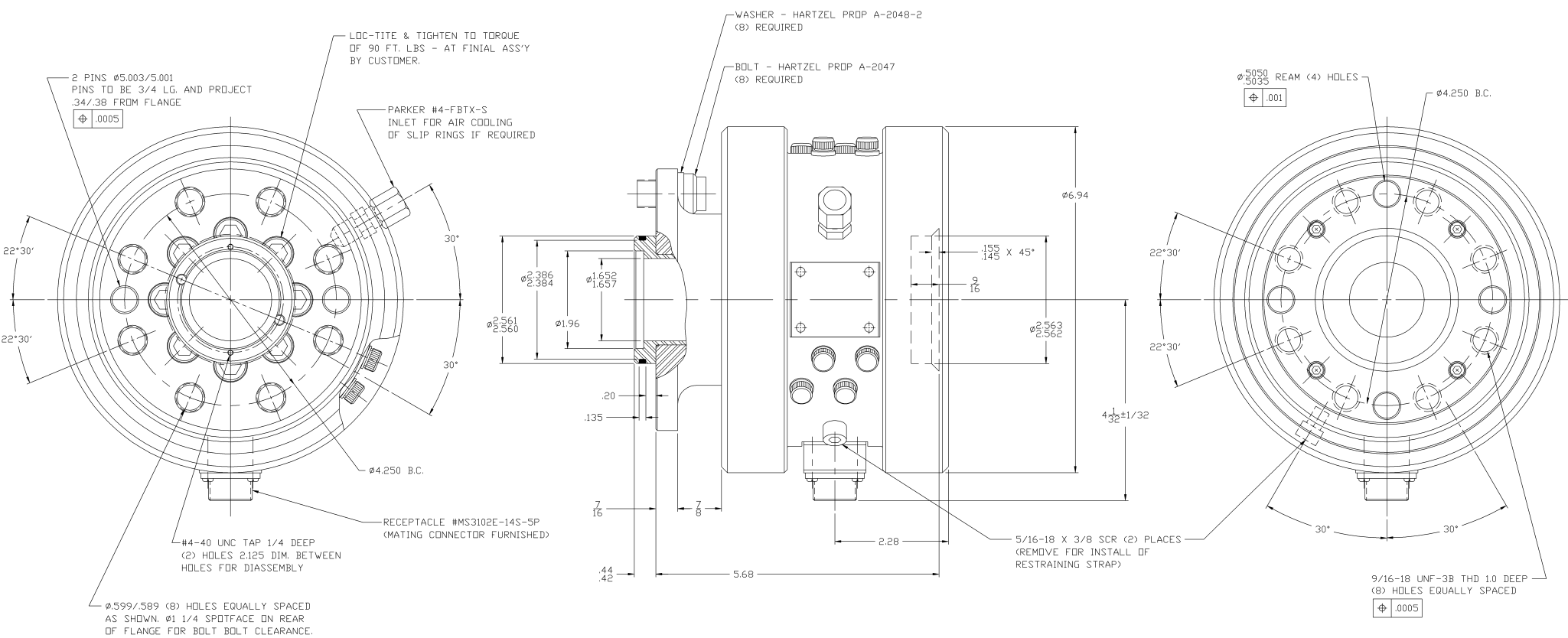


"NOTICE TO PERSONS RECEIVING THIS DRAWING AND/OR TECHNICAL INFORMATION"
 Lebow Products claims proprietary rights to the material disclosed herein. This drawing and/or technical information is issued in confidence for engineering information only and may not be reproduced or used to manufacture anything shown or referred to herein without direct written permission from Lebow Products to the user. This drawing and/or technical information is the property of Lebow Products and is loaned for mutual assistance, to be returned when its purpose has been served.

DET. NO.	PART NO.	DESCRIPTION	REV'D.
		Lebow Products Lebow Products Troy, Michigan	
UNLESS OTHERWISE SPECIFIED LINEAR DIMENSIONS ARE IN INCHES REMOVE ALL BURRS & ANGULAR DIMENSIONS ARE IN DEGREES SHARP EDGES DIMENSION LIMITS HELD AFTER PLATING SURFACE FINISH 125 ✓			
TOLERANCES			
DRILLED HOLES - .000 + .007	TWO PLACE DECIMALS ± .005	THREE PLACE DECIMALS ± .002	ANGLES ± 0° 30'
SCALE: NONE	REF. DWG. C-30029	FRACTIONAL DIMENSIONS 1/164	MATL. -
TITLE: SPROCKET SENSOR O.D.		DR. BY: CW	ENGR. GPH
DATE: 9/7/82		CHK'D. BY: GPH	ENGR. GPH
ECN NO.		DATE: 9/22/82	DATE: 9/22/82
SYM.		MODEL: 1388	REV.
		DRAWING NO. C-30028	

REVISIONS	DESCRIPTION
1	ISSUE
2	REPAIRMAN ON CAD
3	DATE
4	APPV'D.
5	CHK'D.
6	ECN NO.
7	SYM.

"NOTICE TO PERSONS RECEIVING THIS DRAWING AND/OR TECHNICAL INFORMATION"
 Lebow Products Corp. proprietary rights to the technical details herein, the drawing and/or technical information, shall be confidence for engineering information only and may not be reproduced or used for manufacture, copying, printing or otherwise without direct written permission from Lebow Products to the user. The drawing and/or technical information is the property of Lebow Products and is loaned for mutual assistance to be returned when its purpose has been served.

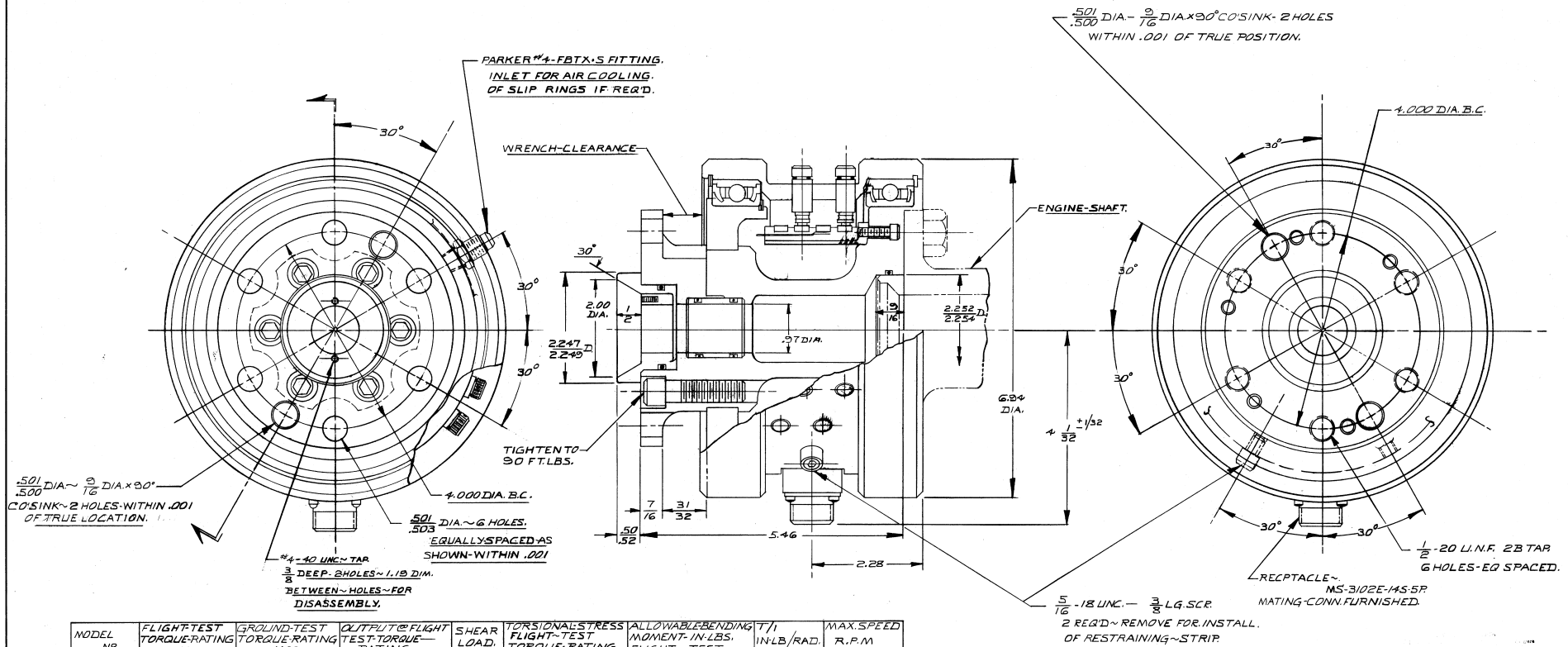


NOTES:
 1.) GROUND TEST ONLY
 2.) GROUND RATED

SPECIFICATIONS:
 OUTPUT: 15 MV.V NOM.
 SPEED: 3500 R.P.M. MAX.

Ⓟ

REV. NO.	PART NO.	DESCRIPTION	REV.
VSR M-27473		Lebow Products Troy, Michigan	
UNLESS OTHERWISE SPECIFIED LINEAR DIMENSIONS ARE IN INCHES REMOVE ALL BURRS & SHARP EDGES ANGULAR DIMENSIONS ARE IN DEGREES SURFACE FINISH IS ✓ DIMENSION LIMITS HELD AFTER PLATING			
TOLERANCES		DR BY: AGA	CHK BY: ENR
DRILLED HOLES	TWO PLACE DECIMALS	THREE PLACE DECIMALS	ANGLES ± 0.30°
SCALE: NONE	REF. SVGS: D-27474	FRACTIONAL DIMENSIONS: 1/8	DATE: 3/15/79
DATE: 3/15/79	APP'D: [Signature]	CHK'D: [Signature]	REV.:
CON. NO.:	ECON. NO.:	TITLE: INSTALLATION-TURBO-PROP TORQUE PICK-UP	DRAWING NO. D-27473



MODEL NO	FLIGHT TEST TORQUE RATING IN LBS.	GROUND TEST TORQUE RATING IN LBS.	OUTPUT @ FLIGHT TEST TORQUE - RATING	SHEAR LOAD	TORSIONAL STRESS FLIGHT TEST TORQUE RATING	ALLOWABLE BENDING MOMENT - IN LBS. FLIGHT TEST.	T/I IN LB/RAD.	MAX. SPEED R.P.M.
1308-10K	10,000	15,000	1.0 MV/V	3,000	12,000	11,500	354 x 10 ⁶	3500
1308-13K	13,000	20,000	1.0 MV/V	4,000	12,000	14,500	410 x 10 ⁶	3500
1308-16K	16,000	24,000	1.0 MV/V	4,500	12,000	16,000	433 x 10 ⁶	3500
1308-20K	20,000	30,000	1.0 MV/V	5,000	12,000	18,000	478 x 10 ⁶	3500

© FLIGHT TESTED

REV. NO.	PART NO.	DESCRIPTION	REQ'D.
		OUTSIDE DIMENSIONS OF PROP. SHAFT - TORQUE - PICK UP	
		RECALL TO BUYER 12/20/55	
		DATE: 12/20/55	
		CHK'D BY: [Signature]	
		WORK: 308	
		JOB NO.	
		MAT'L	
		UNLESS OTHERWISE SPECIFIED:	
		TOLERANCE ON FRACTIONS: 1/16	± .001
		TWO PLACE DECIMALS: 1.00	± .005
		THREE PLACE DECIMALS: 0.000	± .001
		ANGLES: 1/32"	± .001
		SURFACE FINISH: 125/	
		TOLERANCE ON DRILLED HOLES: ± .001	
		REMOVE ALL BURR & SHARP EDGES	
		DIMENSION LINES HELD AFTER PLATING	
		DATE: 12/20/55	
		DESIGNED BY: [Signature]	
		DRAWN BY: [Signature]	
		LEBOW ASSOCIATES, INC.	
		TROY, MICHIGAN	
		D-1308-D	

SYMBOL	REVISION	DATE
L	ADDED FLIGHT TESTED	6-74
K	ECN 2802	7-74
J	REDRAWN HAS	7-55