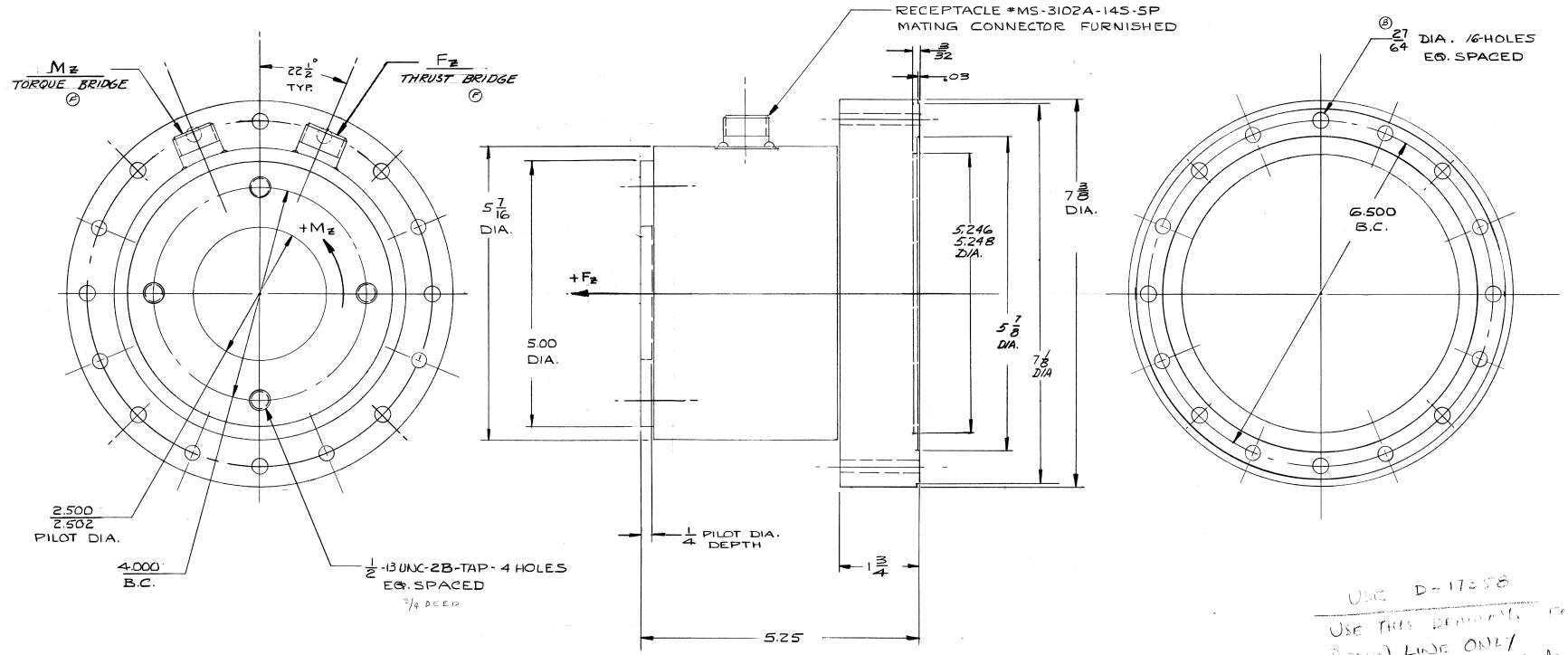


SCANNED
20 11 2015



SPECIFICATIONS ^(A)

FATIGUE RATED CAPACITY — $\left(\begin{matrix} M_z - 5000 \text{ LB. IN.} \\ F_z - 10000 \text{ LB.} \end{matrix} \right) - \left(\begin{matrix} M_z - 2500 \text{ LB. IN.} \\ F_z - 5000 \text{ LBS.} \end{matrix} \right) - \left(\begin{matrix} M_z - 1000 \text{ LB. IN.} \\ F_z - 5000 \text{ LBS.} \end{matrix} \right)$

OUTPUT @ RATED FATIGUE CAP. — 1.5 MV/V NOM.

BRIDGE RESISTANCE — 700 Ω

| REV. | REVISION | DATE | SCALE | DESIGN BY: | CHKD. BY: | APP'D. BY: | JOB NO. |
|------|-----------------------|----------|-------|------------|-----------|------------|---------|
| C | MS BRIDGE 11/18/15 | 11/18/15 | FULL | KISH, A | | | |
| B | ADDED 1K IN. 11/18/15 | 11/18/15 | | | | | |
| D | ECN 2357 | 11/18/15 | 1:1 | | | | |
| C | ADDED CAR 11/18/15 | 11/18/15 | | | | | |
| B | ECN-2256 | 11/18/15 | | | | | |
| A | REPERATED 11/18/15 | 11/18/15 | | | | | |
| A | REVISED 11/18/15 | 11/18/15 | | | | | |

TORQUE AND THRUST SENSOR

UNLESS OTHERWISE SPECIFIED:
 TOLERANCE ON FRACTIONS 1:124
 TOLERANCE ON DRILLED HOLES ±.002
 TWO PLACE DECIMALS 1:510
 REMOVE ALL BURRS & SHARP EDGES
 THREE PLACE DECIMALS 1:500
 DIMENSION LIMITS HELD AFTER PLATING
 SURFACE FINISH 113/2

LEBOW ASSOCIATES, INC.
 TROY, MICHIGAN

D-6467-D

REC D-17358